

# Updates from the CDC Environmental Public Health Tracking Program

*Health and Air Quality Applications Program Review, October 2021*

**Nicholas Skaff, PhD**

*Environmental Public Health Tracking Program*

*Emergency Management, Radiation, and Chemical Branch*

*Division of Environmental Health Science and Practice*



National Center for Environmental Health



# TRACKING PROGRAM GOAL

Increase the number of **data-driven environmental public health actions** and decisions by providing information from a nationwide network of standardized, integrated health and environmental data.

# The Tracking Program

26

Grantees

25 states / 1 city

41

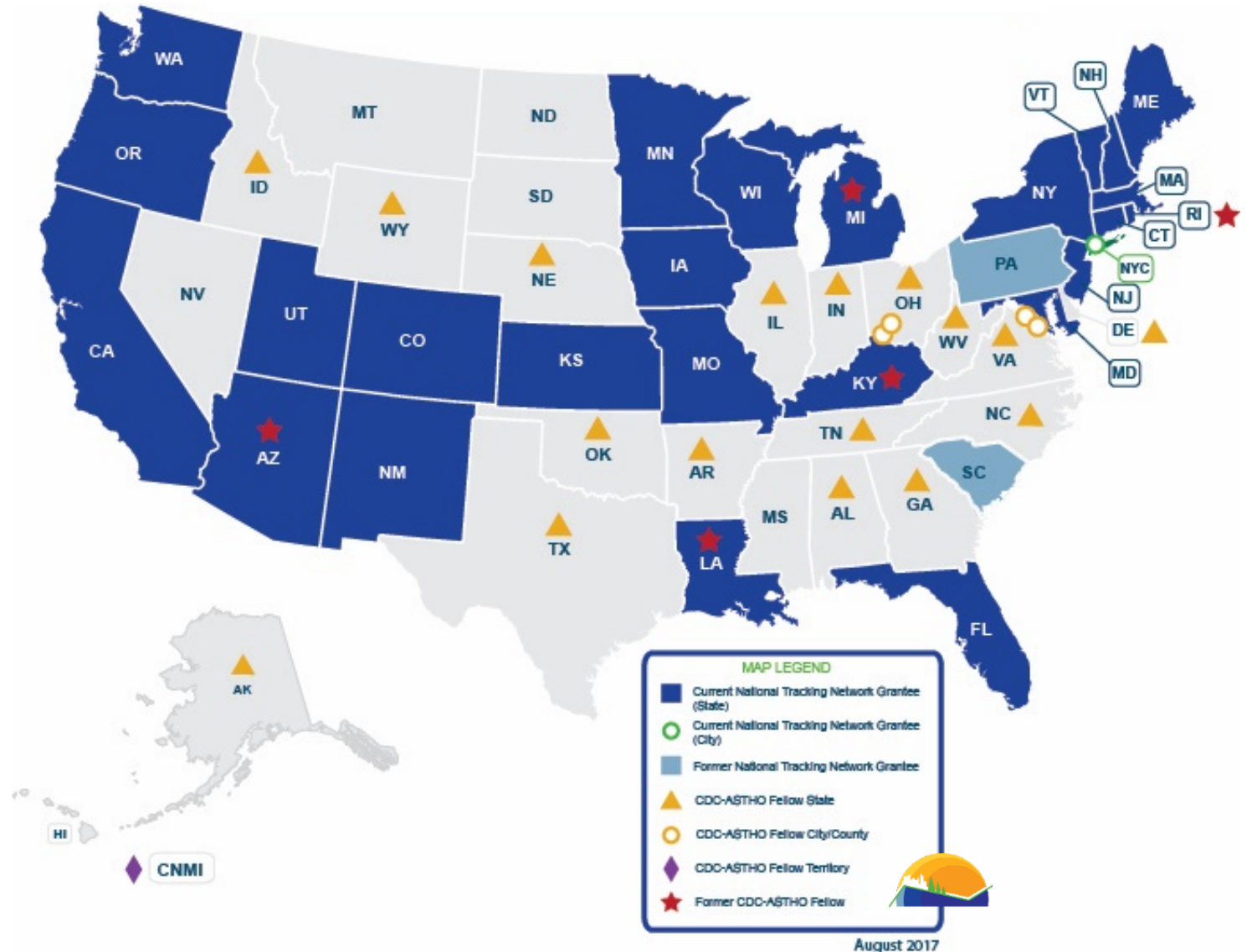
CDC-ASTHO Fellowships

Since 2009

25+

Partnerships

With CDC Programs, Other Federal Agencies, National Organizations





ENVIRONMENTAL PUBLIC HEALTH

TRACKING

# CONNECTS ENVIRONMENT & HEALTH INFORMATION

## Environmental



- Air Quality
- Drought
- Community Water
- Flood Vulnerability
- Community Design
- Temperature Distribution

Pesticide Exposures •  
Toxic Substance Releases •  
Other Environmental Chemicals •

## Exposures



## Health Effects



- Asthma
- Cancer
- Heart Disease
- Heat Stress Illness
- Childhood Lead Poisoning
- Developmental Disabilities
- Carbon Monoxide Poisoning
- Reproductive and Birth Outcomes

## Population Characteristics



Lifestyle Risk Factors •  
Socioeconomics •  
Demographics •  
Vulnerabilities •





ENVIRONMENTAL PUBLIC HEALTH

**TRACKING**

# HELPS IMPROVE HEALTH WITH **DATA, TOOLS, AND EXPERTISE**



*Target  
prevention  
activities*



*Monitor  
community  
health*



*Identify  
communities  
at risk*



*Support  
epidemiologic  
studies*



*Educate  
residents*



*Inform city or  
state planning*



*Inform health  
policies*



*Visit the Tracking Network today  
[www.cdc.gov/ephtracking](http://www.cdc.gov/ephtracking)*

*Check out examples of Tracking in  
Action success stories and products!*

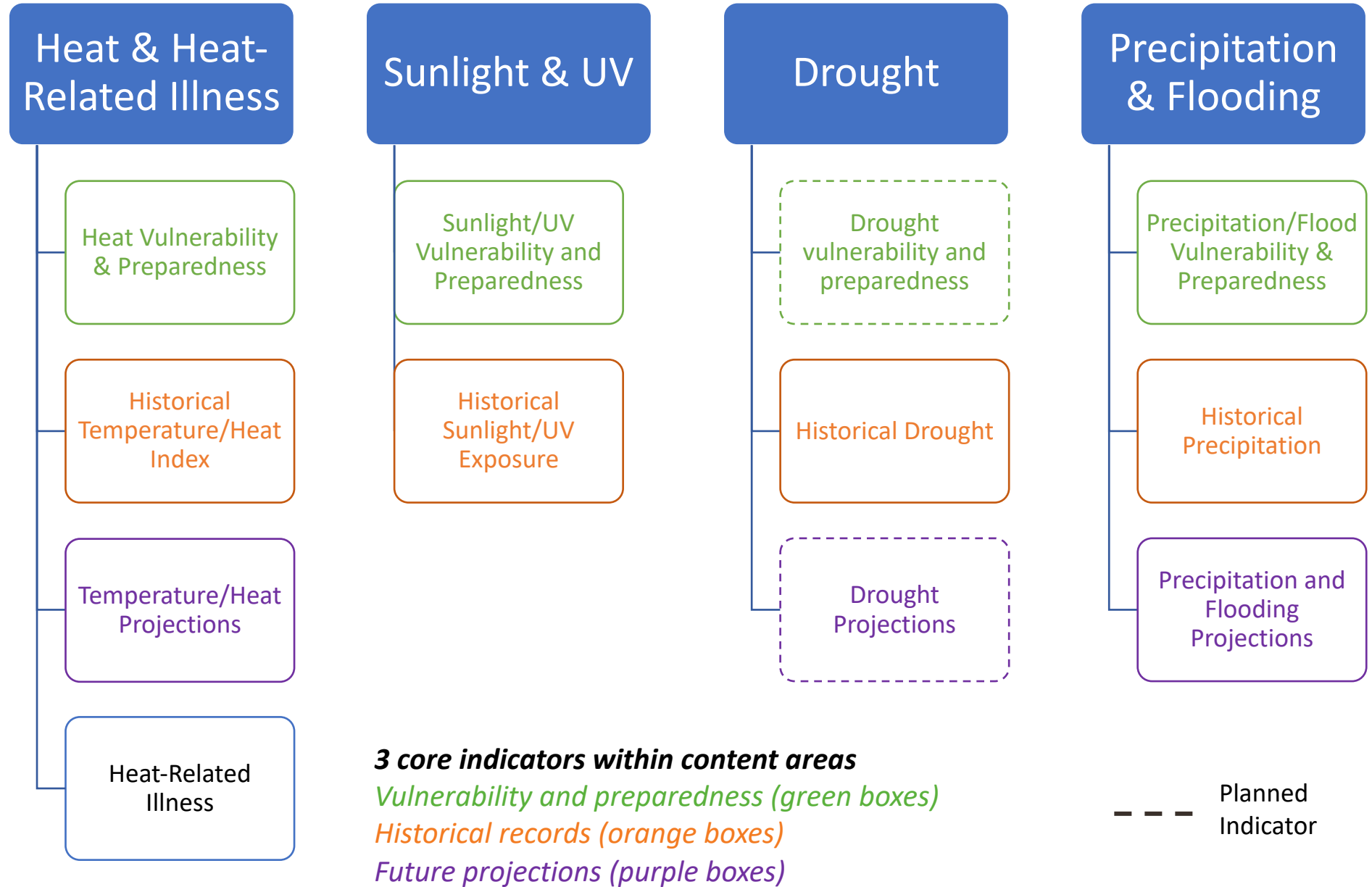


# Looking Forward –

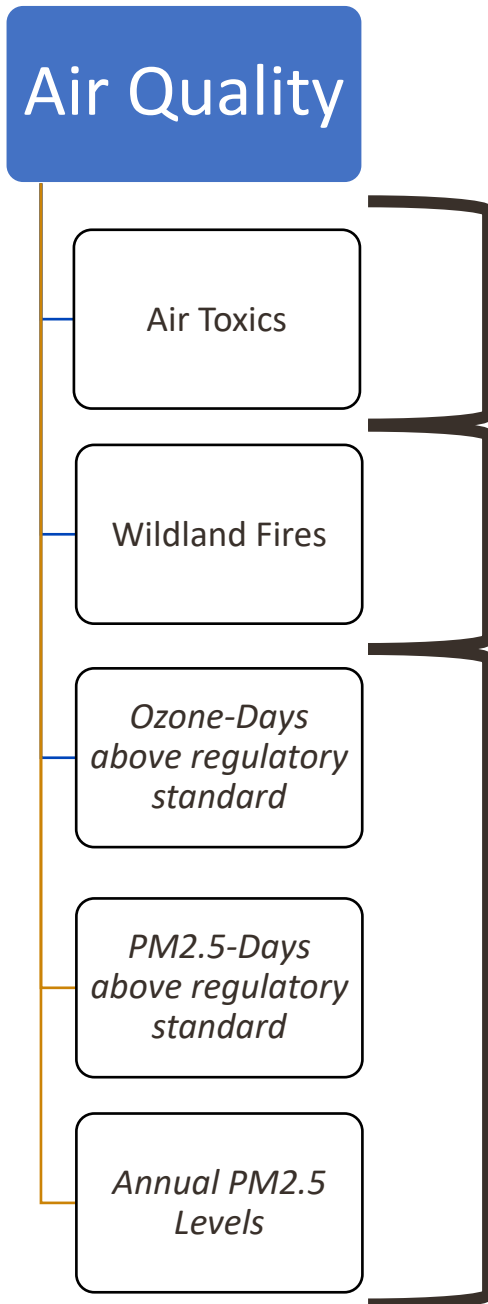
## Division of Environmental Health Science and Practice Priority Areas

- Climate and Natural Disasters
  - Wildfires and prescribed burnings
  - Extreme Heat
  - Drought
  - Flooding
  - Hurricanes
- Harmful algal blooms (HABs)
- Pollen
- Nuclear/Radiation disasters
- Radon
- Childhood lead poisoning
- Asthma
- Drinking water

# Climate-related Content Areas and Indicators in the Tracking Network



**Air Quality  
Related Content  
Areas and  
Indicators in the  
Tracking  
Network**



**National Air Toxics Assessment**



**NATIONAL WEATHER SERVICE**  
NATIONAL OCEANIC AND ATMOSPHERIC ADMINISTRATION





# Examples of Existing Gaps



## Climate

- Inland flooding
- Coastal flooding
- Soil conditions
- Climate shifts from historic baseline



## Other Environmental Hazards

- PAHs in air
- PM2.5 speciation
- Cyanotoxins/  
Harmful Algal Blooms (HABs)
- Aeroallergens/  
Pollen



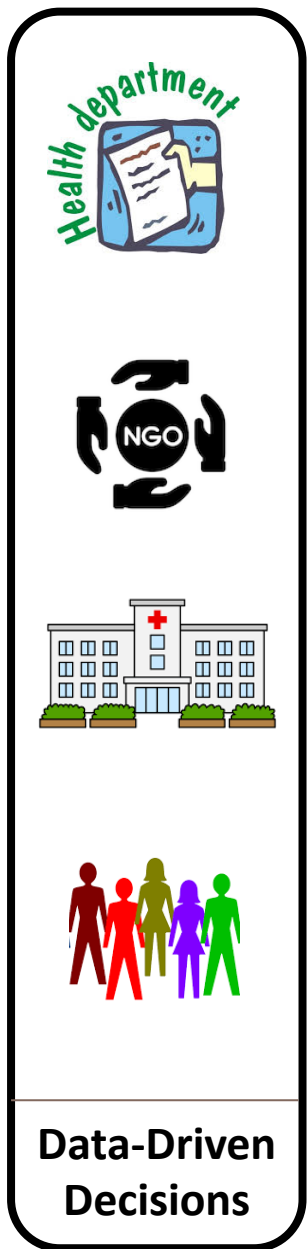
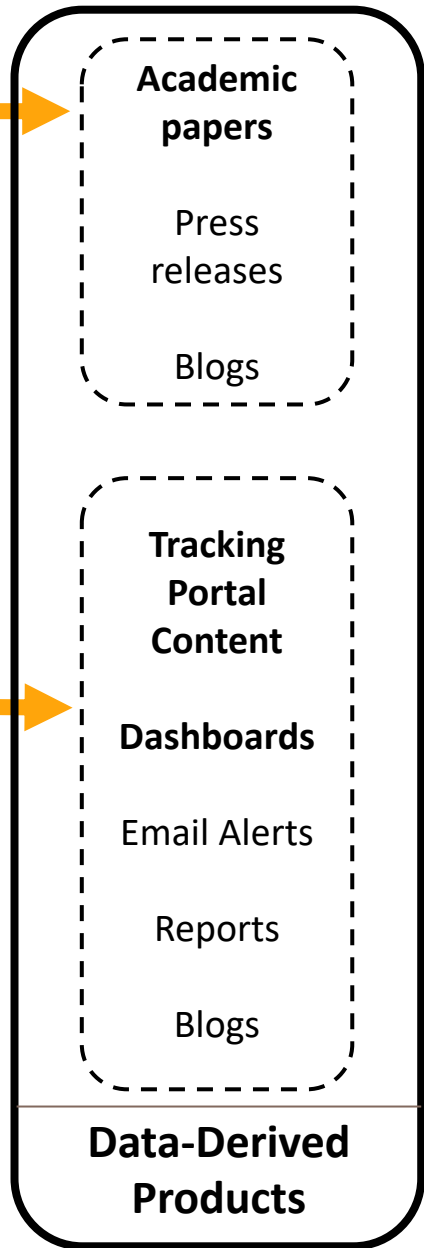
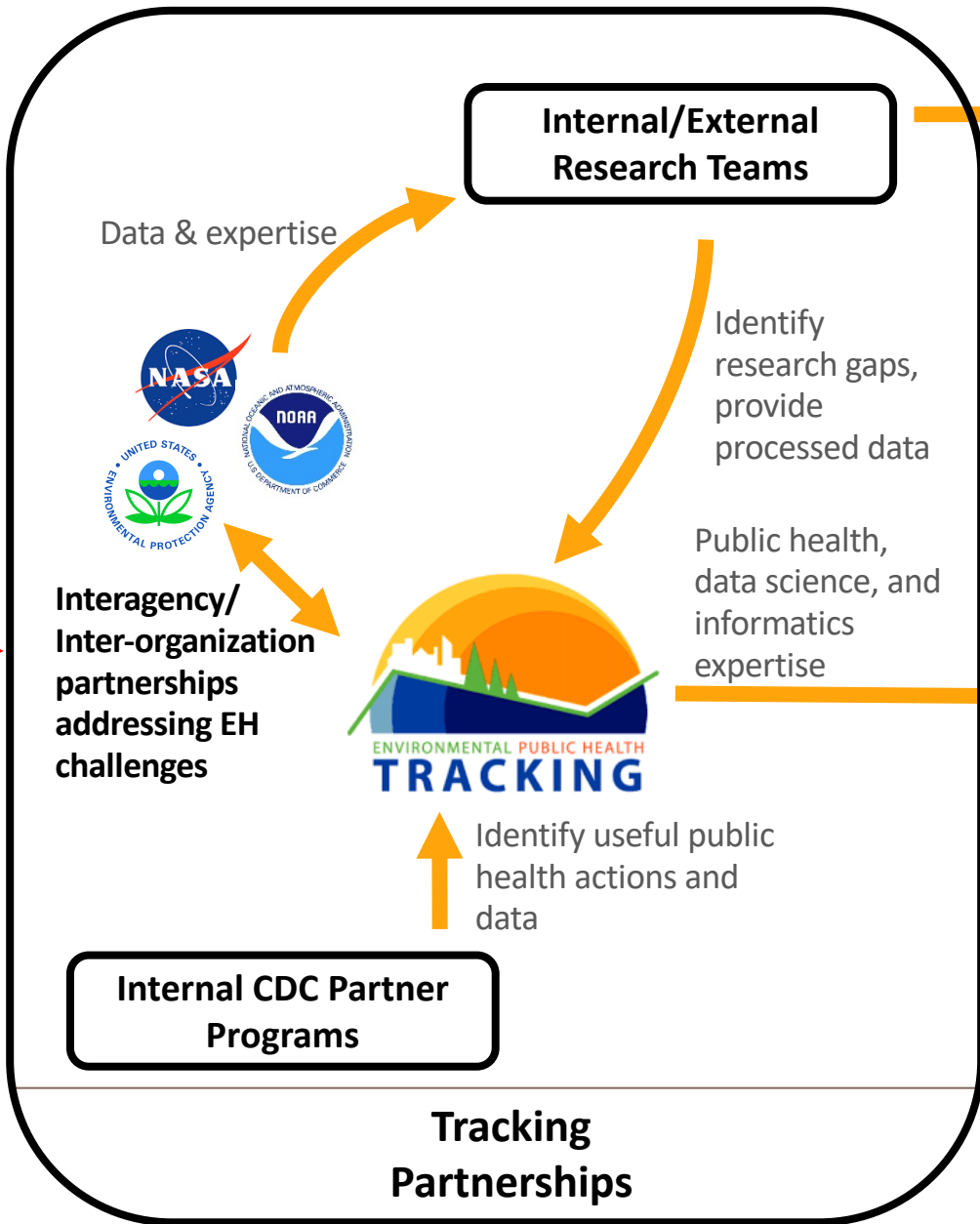
## Exposures

- Agricultural pesticide exposure
- Long-term air pollution exposure



## Health Outcomes

- Vector-borne disease
- HAB toxin related health effects

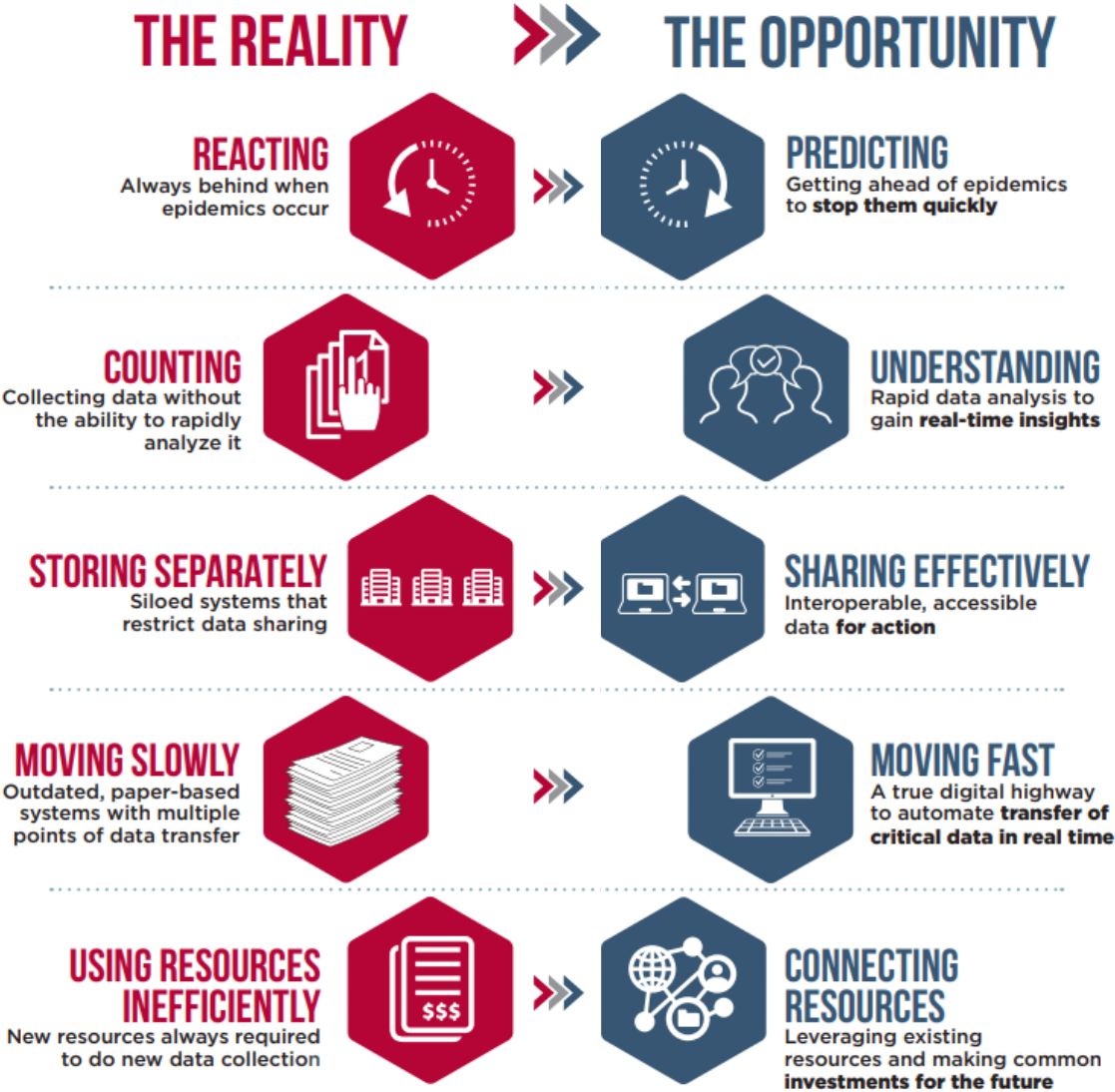


# **CDC Public Health Data Modernization Initiative**

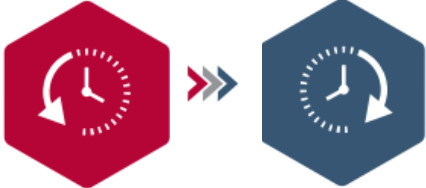
**The goal of CDC's Public Health Data Modernization Initiative is to transform CDC from a culture of primarily historical data analysis to predictive data science.**

**Tracking is well-positioned to take the lead in this area and has traditionally been at the cutting edge of applied data science within CDC.**

# CDC Public Health Data Modernization Initiative



# Planned Improvements to Climate-related Content



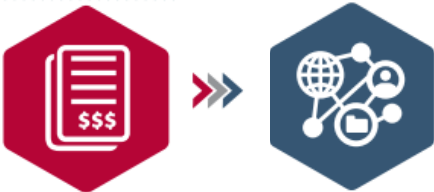
Rapid data updates (e.g., eliminate delays of a year or more)



Finer temporal and spatial scales (e.g., daily, census tract)



Operationalize data more effectively (e.g., dashboards, apps, email reports)



Leverage new data products (e.g., NASA ECOSTRESS, MERRA2, AirNow, PurpleAir)

# Looking Forward – Opportunities for Collaboration

- Characterize exposure, vulnerabilities, and health impacts to take public health action
  - Wildfires and prescribed burnings: forest, agricultural
  - Air pollution: Traffic-related pollutants
  - Climate-related events and natural/manmade disasters: Heat, HABs
- Joint collaborations to assess the effectiveness of policy and other interventions on reducing health impacts
  - Quantify changes in AQ concentrations/sources, in places with no monitors
- Using the Tracking Network as a Decision Support System and as a platform to host earth science data products
  - Need expertise and resources to transform raw data for public health
  - Need repeatable, sustainable data products to support ongoing surveillance

# Questions or Comments?

## **Nicholas Skaff**

Email: [pwc1@cdc.gov](mailto:pwc1@cdc.gov)

Phone: 404.498.3285

*Additional Tracking science staff working  
with air quality data:*

Angela Werner, MPH, PhD ([myo6@cdc.gov](mailto:myo6@cdc.gov))

For more information, contact NCEH

1-800-CDC-INFO (232-4636)

TTY: 1-888-232-6348      [www.cdc.gov](http://www.cdc.gov)

Follow us on Twitter @CDCEnvironment

The findings and conclusions in this report have not been formally disseminated by the Centers for Disease Control and Prevention/the Agency for Toxic Substances and Disease Registry, are those of the authors, and do not necessarily represent the official position of the Centers for Disease Control and Prevention and the Agency for Toxic Substances and Disease Registry.

