



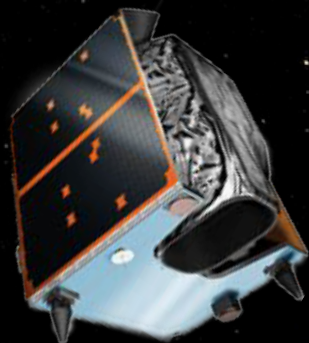
PLANET DISASTER RESPONSE

TFRSAC - May 9th, 2018

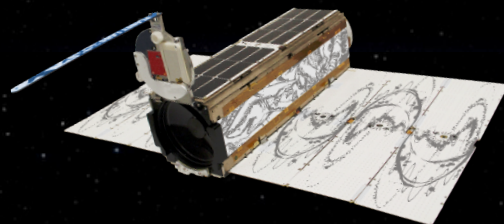
+ Brittany Zajic - Disaster & Humanitarian Response Coordinator



PLANET'S CONSTELLATION

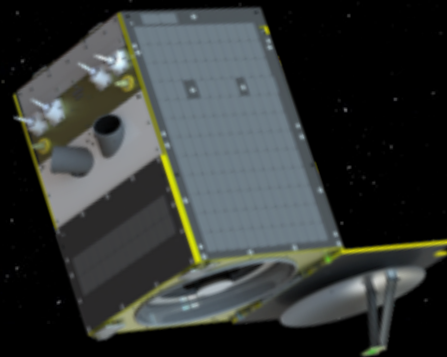


5 RapidEye
Satellites



180+

Dove Satellites
PlanetScope



13 SkySat
Satellites



PLANET APPROACH



Monitoring



Global coverage



Daily online delivery



Affordable



RapidEye
-6M km²/day



PlanetScope
-150M km²/day



SkySat
50K km²/day

Basic Scene Ortho Tile Basemaps

Analytic Visual Analytic

B G R RE NIR R G B B G R RE NIR

Basic Scene Ortho Scene Ortho Tile

Analytic Visual Analytic Visual Analytic

B G R NIR R G B B G R NIR R G B B G R NIR

Basic Scene Ortho Scene

Analytic Panchromatic Visual Analytic Panchromatic Pansharpened

B G R NIR PAN R G B B G R NIR PAN B G R NIR

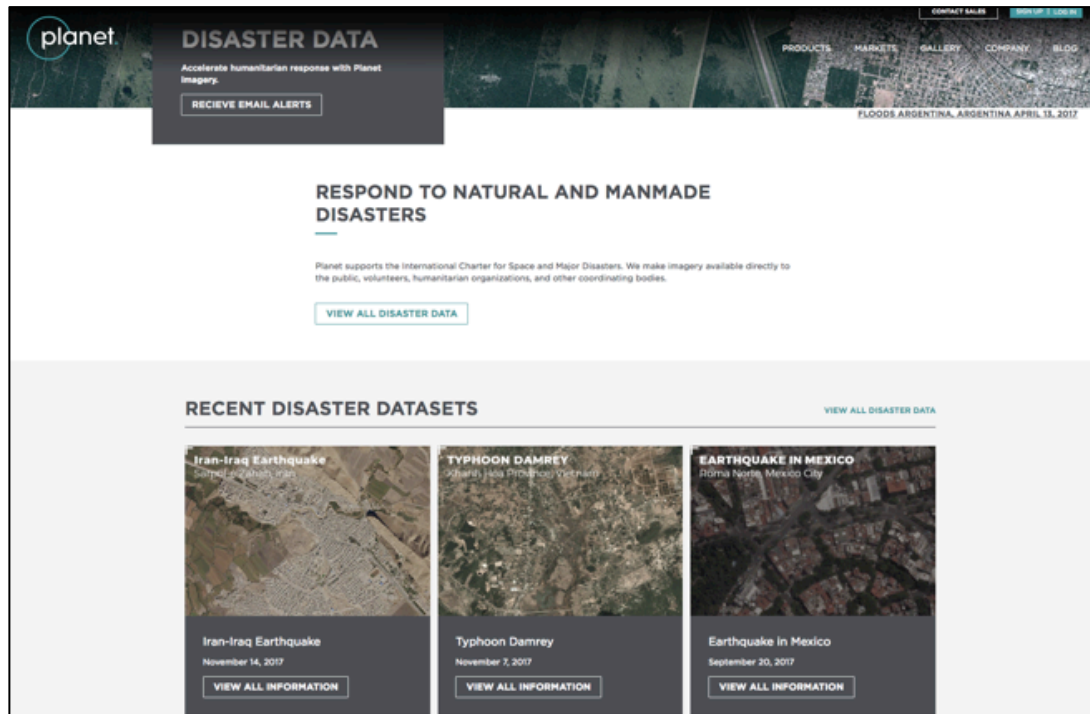




INTERNATIONAL SPACE CHARTER

Planet's Disaster Response Program

Planet supports select Activations for the International Charter for Space and Major Disasters. In the event of a Charter Activation, Planet provides data products and Explorer platform services to responding and coordinating entities.



Link: <https://www.planet.com/disasterdata/>



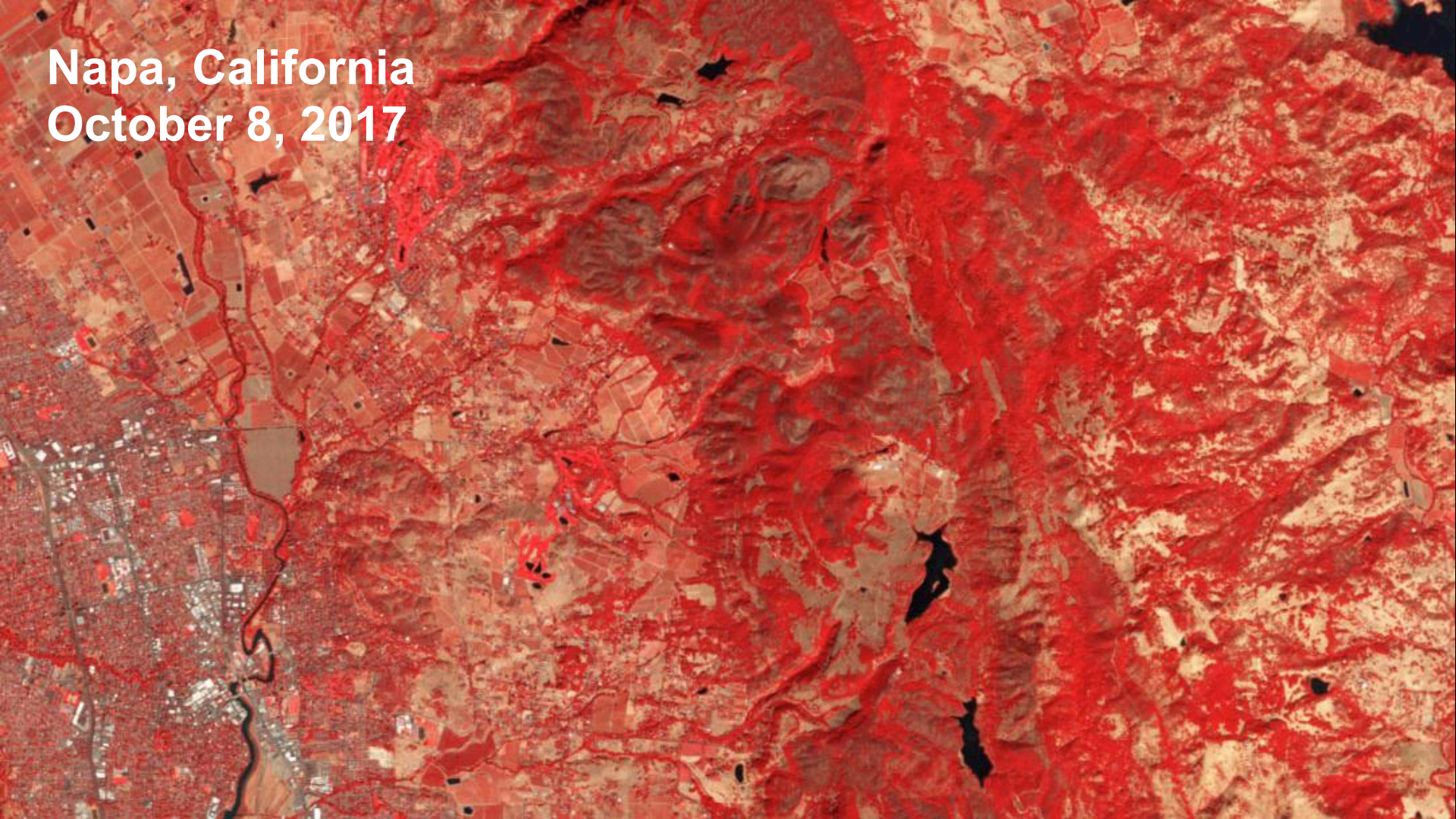


2017 Program Impact

Planet Disaster Response Program

- Monitored over **52** large natural disasters, formally responding to **31** via planet.com/disasterdata
- Reached **200** disaster alert subscribers
- Granted over **100** disaster-access users access to disaster data
- Released **millions** of square kilometers of open data to qualifying entities

Napa, California
October 8, 2017



Napa, California
October 15, 2017



+ Northern CA Wildfires - [LINK](#)



Understanding California's Most Destructive Wildfires

Sonoma & Napa Counties October 2017

[▶ Access Data](#)

A state of emergency for Napa, Sonoma and Yuba counties has been declared as more than a dozen wildfires rage across Northern California.

This interactive map is a tool to identify and understand the extent of damage caused by this disaster. "After" imagery are false colored near-infrared. Red tones represent a vegetation index, helping reveal burn scarring (seen as dark brown).

[VIEW IMAGERY](#)



2017.08

© Planet Labs, Inc.

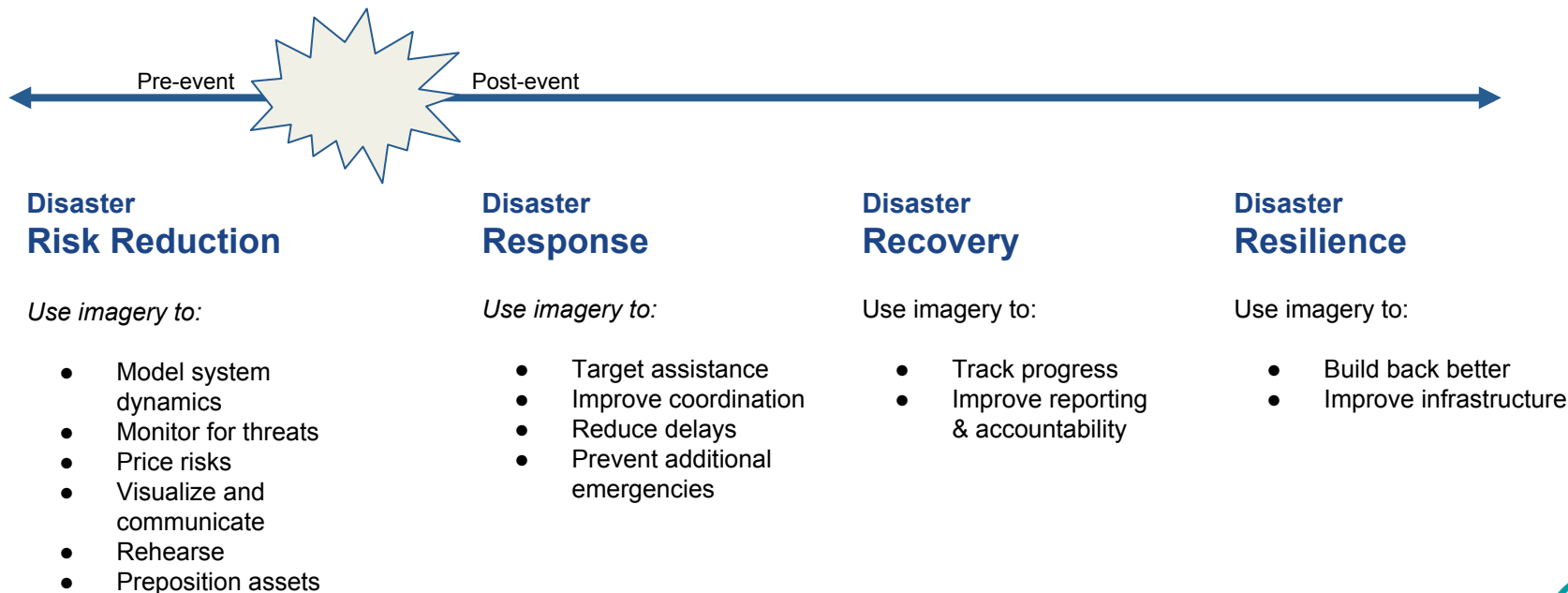
planet.

2017.08

© Planet Labs, Inc.



Where Can Planet Help?



+ Serving the Disaster Response Sector

Emergency & Disaster Management Products

Planet offers tailored medium- and high-resolution monitoring products to the Emergency Management and Disaster Response sector to account for the unpredictable nature of natural disasters and their unique procurement schedules.

These include:

- **Fixed AOI Monitoring (Single Geography)**
- **Flexible Monitoring (Multiple Geography)**

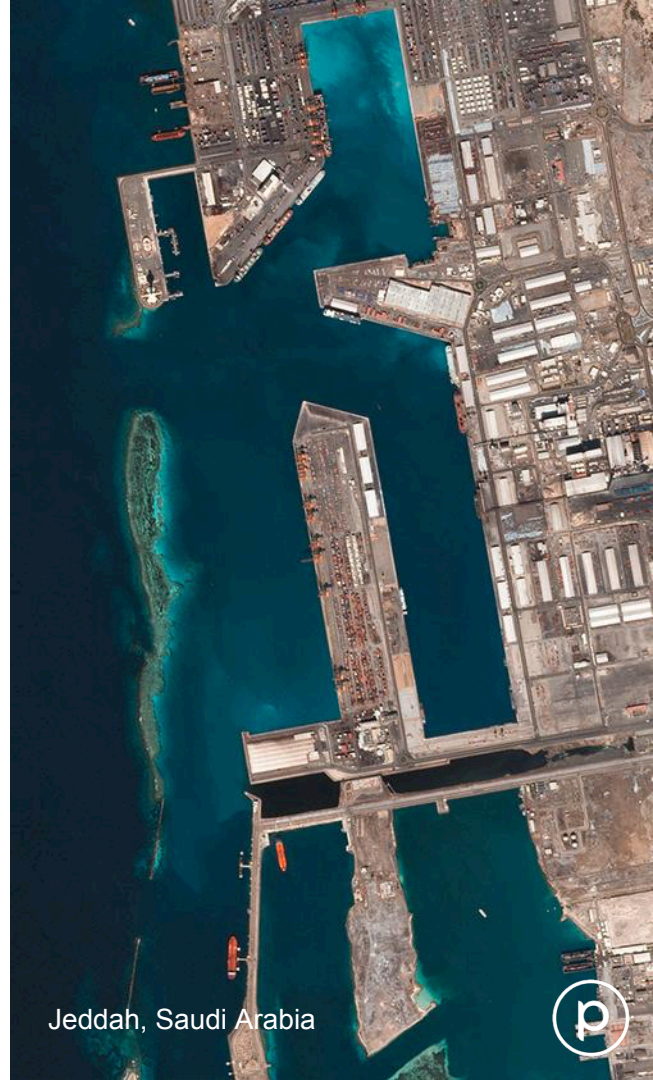


RESOURCES

- [Northern CA Wildfires Tool](#)
- [Southern CA Wildfires Tool](#)
- [Santa Rosa Six Month Recovery Blog](#)
- [Flexible Monitoring for Emergency Management](#)
- [Planet Explorer Trial](#)
- [Planet Open California](#)
- [Planet Disaster Data](#)

+
THANK YOU

Brittany@planet.com



Jeddah, Saudi Arabia

