

Data and Tools from Geostationary: An exercise

Pawan Gupta, and Melanie Follette-Cook

Satellite Remote Sensing of Dust, Fires, Smoke, and Air Quality, July 10-12, 2018

GOES-R – Online Resources

<https://www.goes-r.gov/>



Earth now from GOES

EARTH FROM GOES-EAST [Description](#) | [More Details](#)

The most recent images of Earth's western hemisphere from the GOES constellation .

[ABOUT THE VIEWS](#)

[NOAA WEATHER CONSTELLATION](#)

[GEOSTATIONARY SATELLITES](#)

[POLAR-ORBITING SATELLITES](#)

[GOES VIEW OF EARTH](#)

GOES satellites continually view the continental United States, Pacific and Atlantic Oceans, Central and South America, and Southern Canada. To fully cover Alaska, Hawaii, the entire continental United States and the Pacific and Atlantic Oceans (for tropical storms), NOAA operates two GOES satellites simultaneously: GOES-East and GOES-West. GOES East is located at 75° W and provides most of the U.S. weather information. GOES West is located at 135°W over the Pacific Ocean. In the GOES-R series era, GOES West will be located at 137°W. In addition to two operational satellites, NOAA also maintains an on-orbit spare.

[CONSTANT IMPROVEMENT](#)

[GOES-R SERIES LAUNCHES](#)

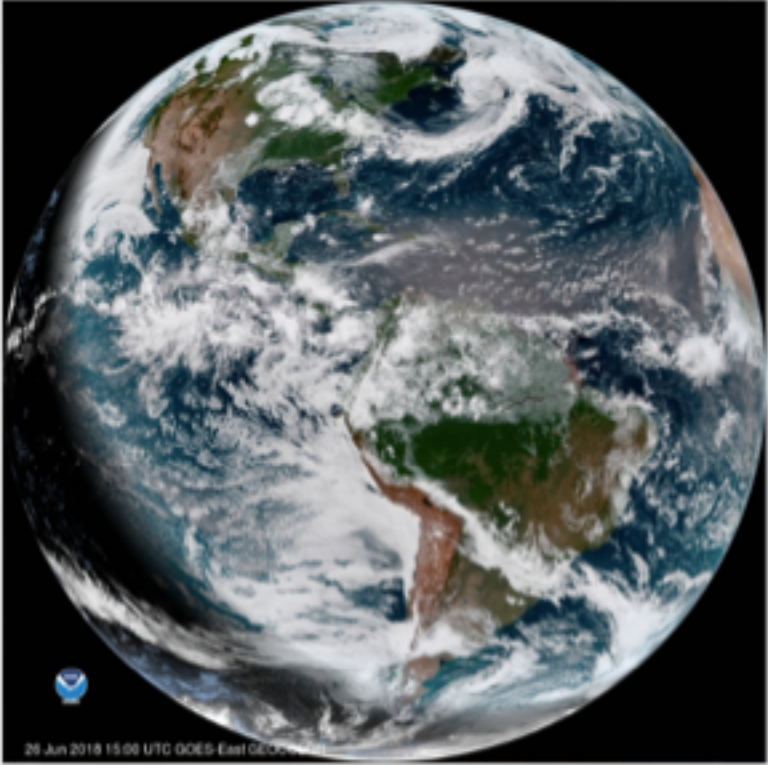
More Details

- [NOAA Satellite Missions](#)
- [Two Orbits, One Mission](#)
- [GOES History](#)

SOLAR ULTRAVIOLET IMAGER CAPTURES SOLAR FLARE

[Feature Story](#)

VIEWS: Full Disk Geocolor CONUS Band 1 (blue visible)
Band 6 (cloud particle IR) Band 10 (water vapor IR) More [↗](#)



26 Jun 2018 15:00 UTC GOES-East Geocolor



Near Real Time Imagery and Tools



[Cooperative Research Program \(CoRP\)](#) | [Center for Satellite Applications and Research \(STAR\)](#)



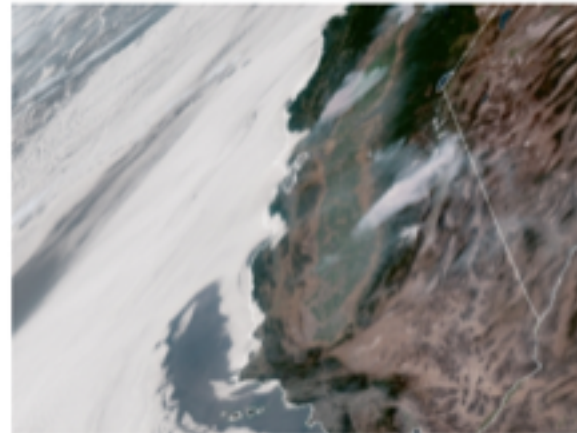
GOES-16 Loop of the Day

Also check out the Himawari Loops of Interest page: [Himawari-8 Loops of Interest](#), which will be updated periodically.

- [RAMSDIS Online Home](#)
- [Tropical](#)
- [GOES-16](#)
 - [Selected Sectors](#)
 - [SLIDER: GOES-16](#)
 - [Loop of the Day](#)
- [GOES-R Proving Ground](#)
- [GOES-West / GOES-East](#)
- [GOES Sounder](#)
- [Central and South America and the Caribbean](#)
- [NOAA-20 VIIRS](#)
- [Suomi NPP VIIRS](#)
 - [Random Granules](#)

Latest Loop

2018-06-25 - Fires and fog in Central California - GeoColor



Click image above for HTML5 loop, or get the [animated GIF](#) or [MP4 video](#)

http://rammb.cira.colostate.edu/ramsais/online/loop_of_the_day/



Near Real Time Imagery and Tools - Slider

2018-06-26 13:15:38 UTC

Stop (space) < >

(L)oop (R)ock Re(v)

Speed

Zoom (+) Zoom (-) Max (Zoom)

(M)ove LatLo(n) Slide(y)

Mouse (D)raw Clear Drawing(s)

(S)atellite GOES-East (G...)

Se(c)tor Full Disk

(P)roduct GeoColor (CIRA)

Add (O)verlay Add (O)verlay

of (I)mages 12

(T)ime Step 15 min

GeoColor (CIRA)

Hide

(A)rchived Imagery

(B)egin D... Begin T...

End Date... End Tim...

Home (y) Share (U)RL Help (T)

SLIDER by RAMMB / CIRA @ CSU
Experimental Products Disclaimer

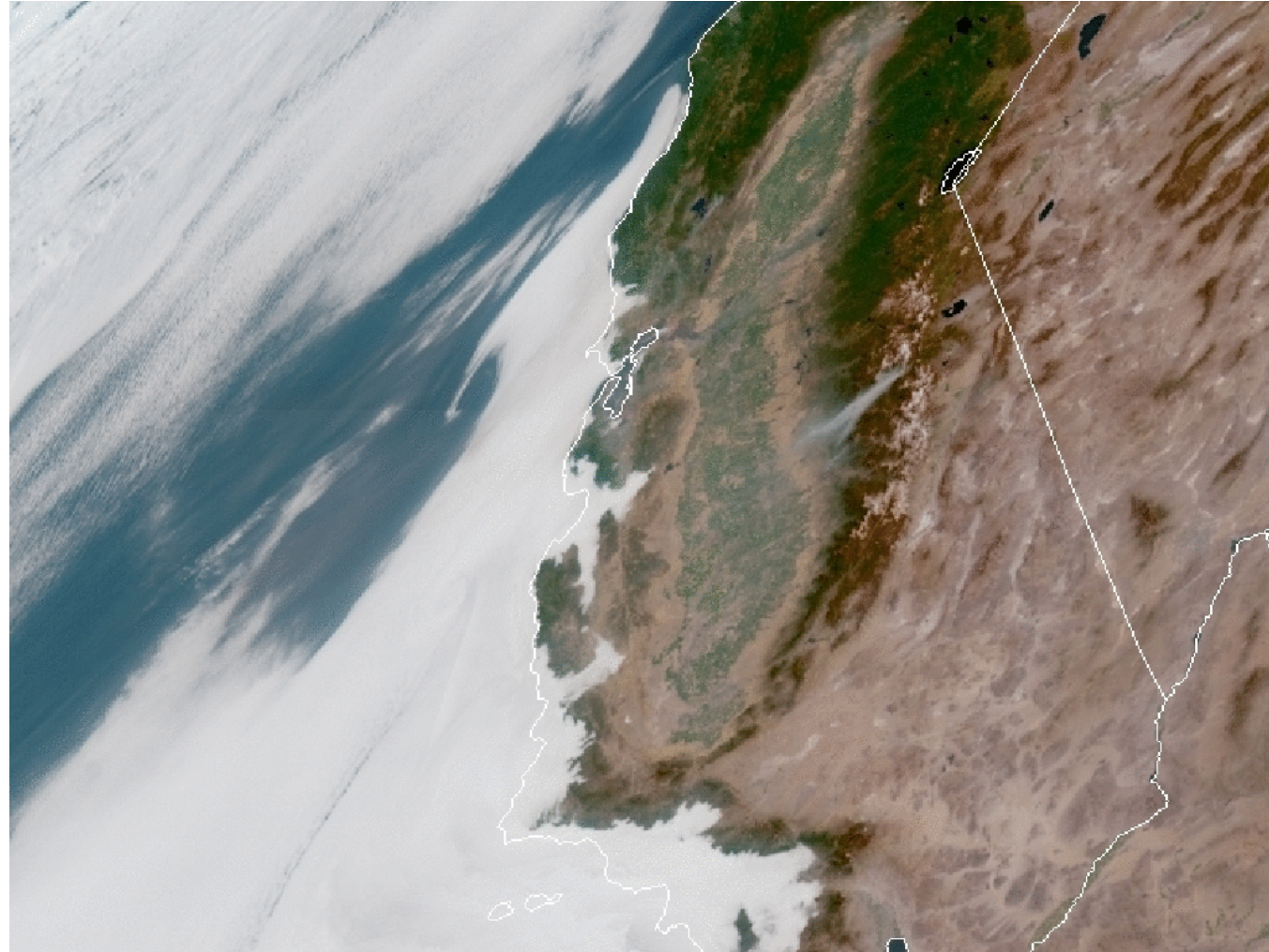
2018-06-26 13:15:38 UTC

CIRA RAMMB

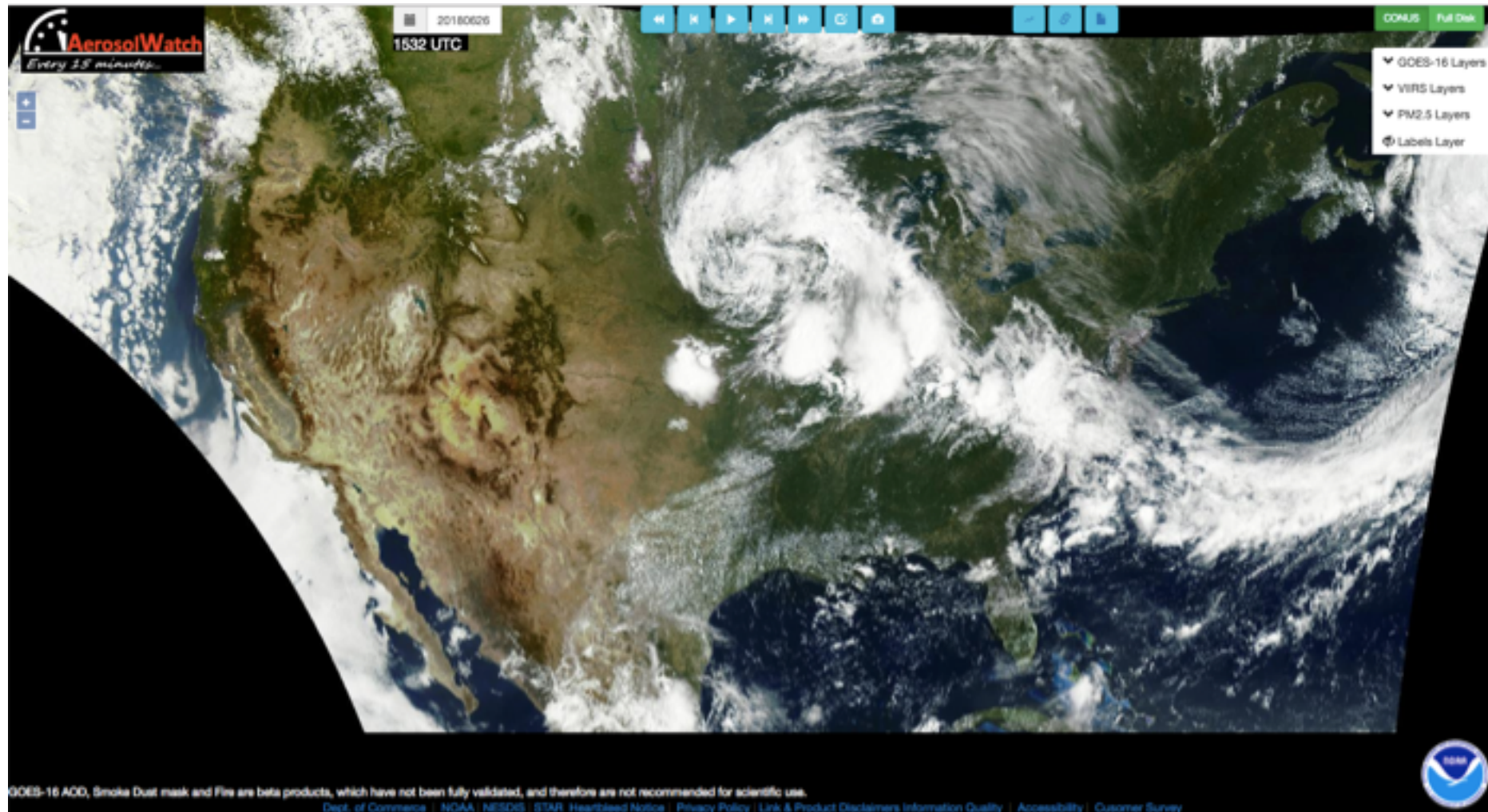
http://rammb-slider.cira.colostate.edu/?sat=goes-16&sec=full_disk&x=10848&y=10848&z=0&im=12&ts=1&st=0&et=0&speed=130&motion=loop&map=1&lat=0&p%5B%5D=16&opacity%5B%5D=1&hidden%5B%5D=0&pause=0&slider=1&hide_controls=0&mouse_draw=0&s=rammb-slider



Loop of the day - 2018-06-25 - Fires and fog in Central California



Aerosol Watch



<https://www.star.nesdis.noaa.gov/smcd/spb/aaq/AerosolWatch/index.php>



NOAA CLASS

The screenshot shows the NOAA Comprehensive Large Array-Data Stewardship System (CLASS) website. The top navigation bar includes links for NOAA HOME, WEATHER, OCEANS, FISHERIES, CHARTING, SATELLITES, CLIMATE, RESEARCH, COASTS, and CAREERS. The main header features the NOAA logo and the text "COMPREHENSIVE LARGE ARRAY-DATA STEWARDSHIP SYSTEM (CLASS) NATIONAL OCEANIC AND ATMOSPHERIC ADMINISTRATION". Below the header, there are navigation links for CLASS Home, Login, Register, Help, About CLASS, and RSS. A search bar is present with a "SEARCH" button. The left sidebar contains a menu with categories: "Around CLASS" (Home, Search for Data, Upload Search, Search Results, Shopping Cart, Order Status, Help), "User Account" (User Profile, User Preferences), "Advanced Options" (Download Keys, FTPS Instructions), "Release Info" (Version 8.1.1.0.2, May 24, 2018), and "Other Links" (CLASS Home, NCEI, NESDIS, NOAA, DOC). The main content area has a search input field with the placeholder "Please select a product to search" and a "GO" button. Below this, there are radio buttons for "Search by:" with "Data Product" selected, and options for "Dataset Name" and "UUID". A "Search collection metadata:" field with a "Submit" button is also visible. The main content area lists two categories of data products: "Environmental Data from Polar-orbiting Satellites" and "Environmental Data from Geostationary Satellites". The "Geostationary Satellites" section contains a long list of data products, each with a plus icon and a name in parentheses, such as "GOES Satellite Data - Block 11 (GVAR_B11)", "GOES-R Series ABI Instrument Calibration Data (GRICAB)", and "Sea Surface Temperature (from GOES) (GOESSST)".

<https://www.bou.class.noaa.gov/sad/products/cassearch>



Other Resources

Additional GOES-16 imagery can be found through the following websites:

- [GOES-East Image Viewer](#)
- [GOES-16 Real-Time Imagery CIRA](#)
- [CIRA GOES-16 Loop of the Day](#)
- [GOES-16 Mesoscale Domain Sectors CIRA](#)
- [CIMSS Satellite Blog](#)
- [CIMSS RealEarth: ABI and GLM Data](#)
- [NASA SPoRT Real-Time ABI Data](#)
- [NASA SPoRT Real-Time GLM Data](#)
- [SSEC Geostationary Satellite Imagery: GOES-16](#)
- [UMD-CICS GLM Data](#)

<https://www.goes-r.gov/multimedia/dataAndimagery/images.html#GOES-EastOperational>



JAXA Himawari Monitor

JAXA Himawari Monitor
P-Tree System

日本語 Last Update: 26 Jun 2018 16:01:25 UTC

Date: 2018 / 6 / 26 15 : 40~49 UTC Search

-1day -1hour -10min Latest Image +10min +1hour +1day

10 min

Layer Menu

Overlay:

- Coastline (1:50m)
- Coastline (1:10m)
- Latitude/Longitude
- Major River

JAXA Products:

- Sea Surface Temperature
- Sea Surface Temperature (Night Mode)
- Aerosol Optical Thickness
- Short Wave Radiation
- Chlorophyll-a
- Wild Fire
- Photovoltaic Power

RGB (Himawari)

Layer Opacity Control

Full Screen

What's New

Apr/20/'18
NEW The Earth Observation Research Center (EORC) entire webpages will be the HTTPS-Only from October this year. This is due to adopt the security standard that all websites and web services only provide service through a secure HTTPS connection.
>>detail

Feb/08/'18 Due to the maintenance of the Himawari-8 satellite, all of the Himawari-8 products will be unballable during the following period.

<http://www.eorc.jaxa.jp/piree/>

