

NASA Worldview Exercise

NASA Worldview

<https://worldview.earthdata.nasa.gov/>

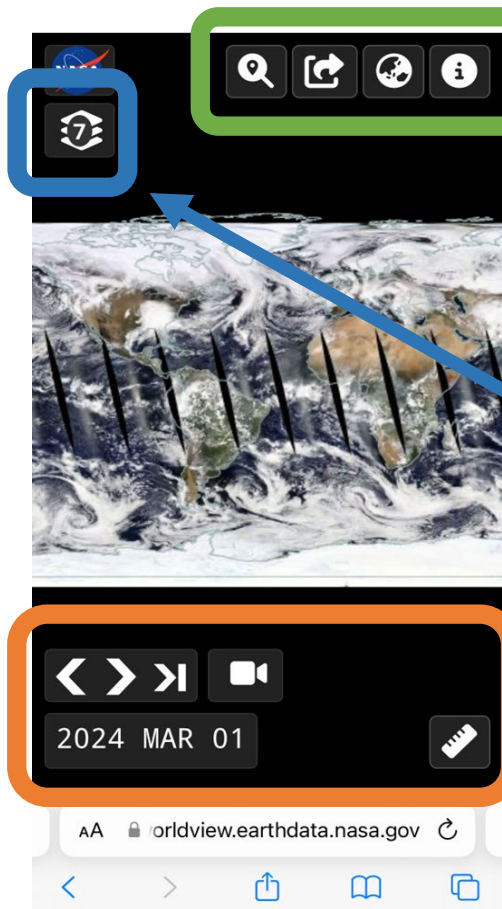
Access Earth satellite remote sensing data easily

- 1000+ global, full-resolution satellite imagery layers
- Some imagery available in near real time (NRT)
- Choose date or date range
- Browse, search, save, share & download imagery layers
- Worldview is built by the NASA/GSFC [Earth Science Data and Information System \(ESDIS\) Project](#).



Worldview Controls

Mobile Browser



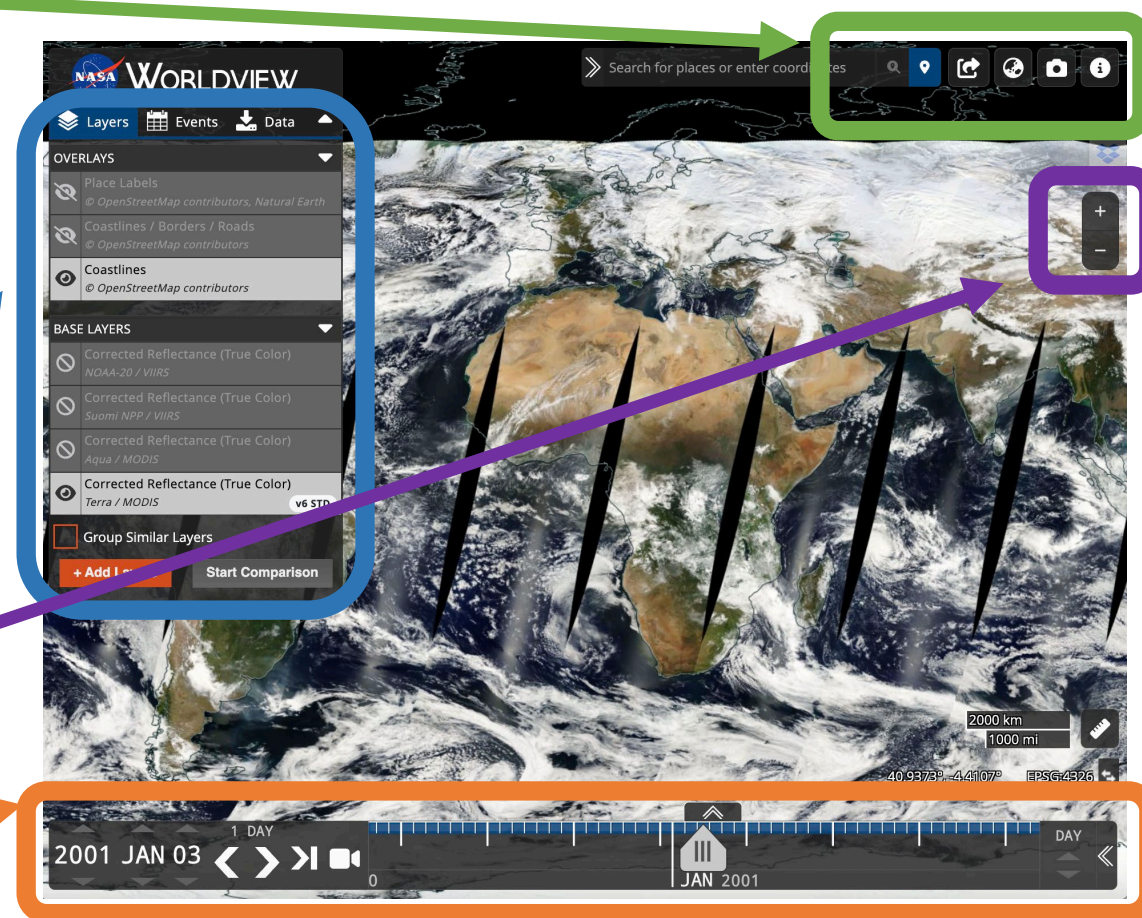
- Search by location
- Share image
- Change projection
- Help/info

- View layers, events
- Add image layers
- Download data

- Zoom via buttons or mobile device pinch

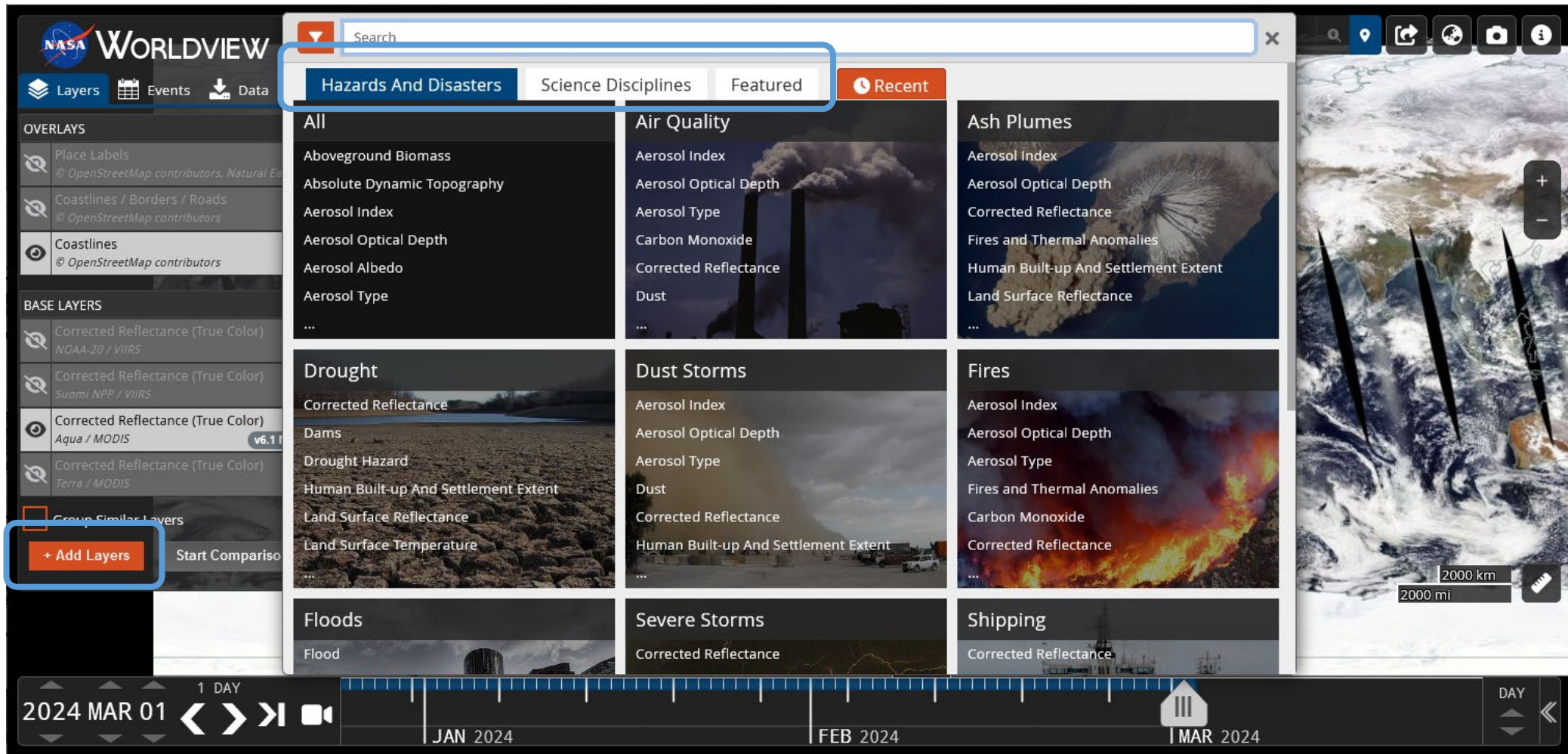
- Choose date & time
- Create an animation

Desktop Browser



Explore Imagery Layers

Organized by application area and science discipline

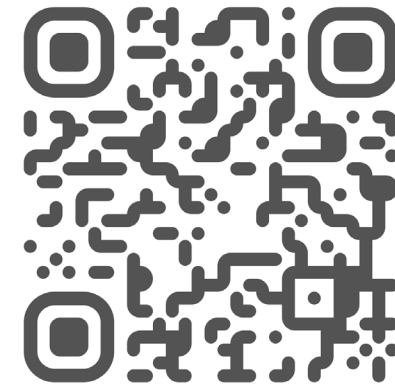
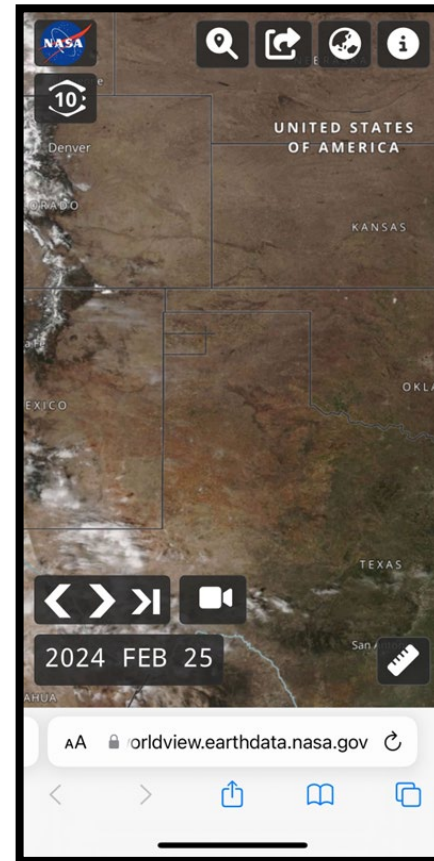


Worldview Exercise – Part 1

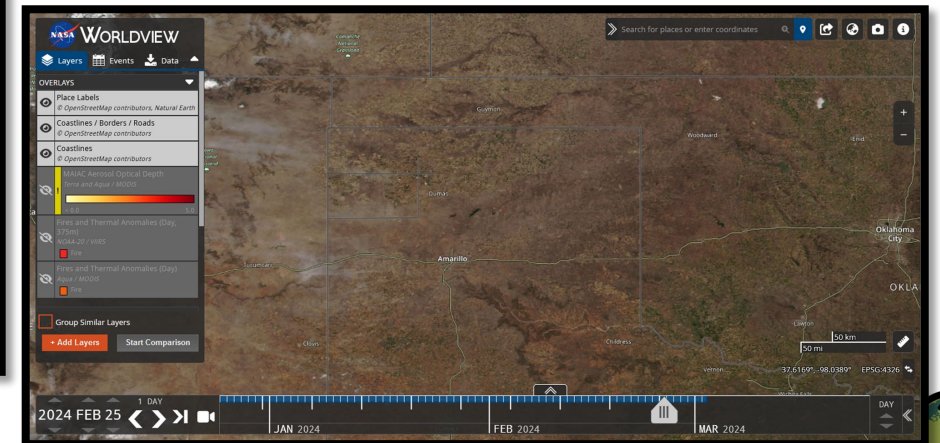
Explore Worldview navigation

1. Zoom in and out
2. Change the date and see the event evolve
3. Examine satellite basemap layers
4. Explore available layers
 - Fire detections from MODIS
 - Fire detections from VIIRS
 - Aerosols from MODIS
5. Make an animation

Smokehouse Creek Fire, TX Feb 26, 2024



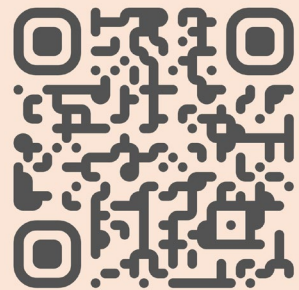
go.nasa.gov/3wON6he



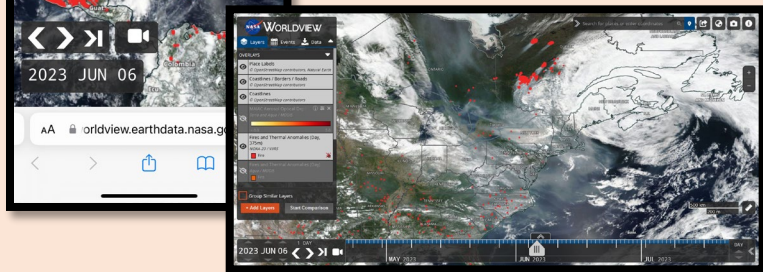
Worldview Exercise – Part 2

Explore additional examples

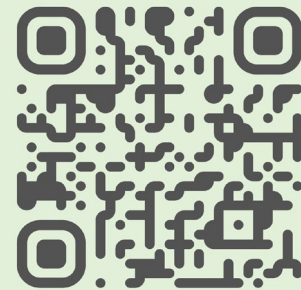
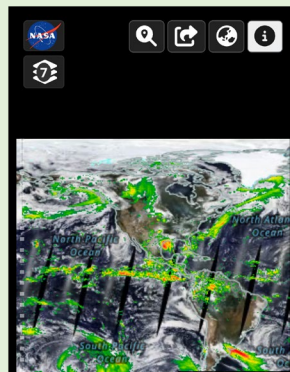
Canada Fires and East Coast Air Quality June 2023



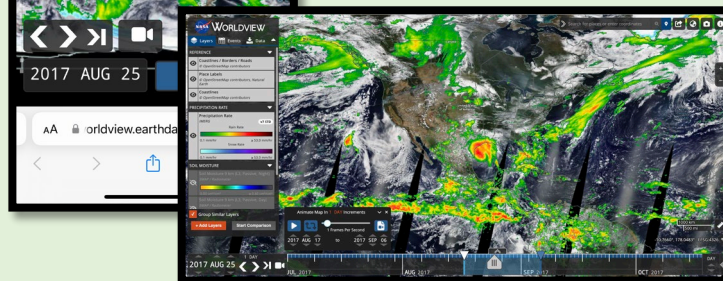
go.nasa.gov/48FhQ1H



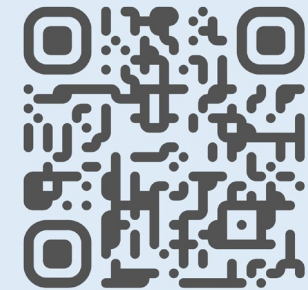
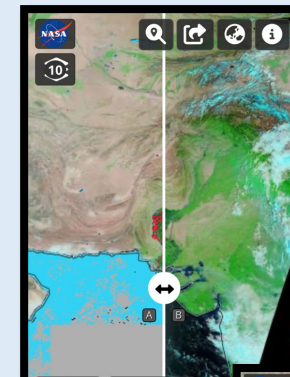
Hurricane Harvey August 2017



go.nasa.gov/3V43WTI



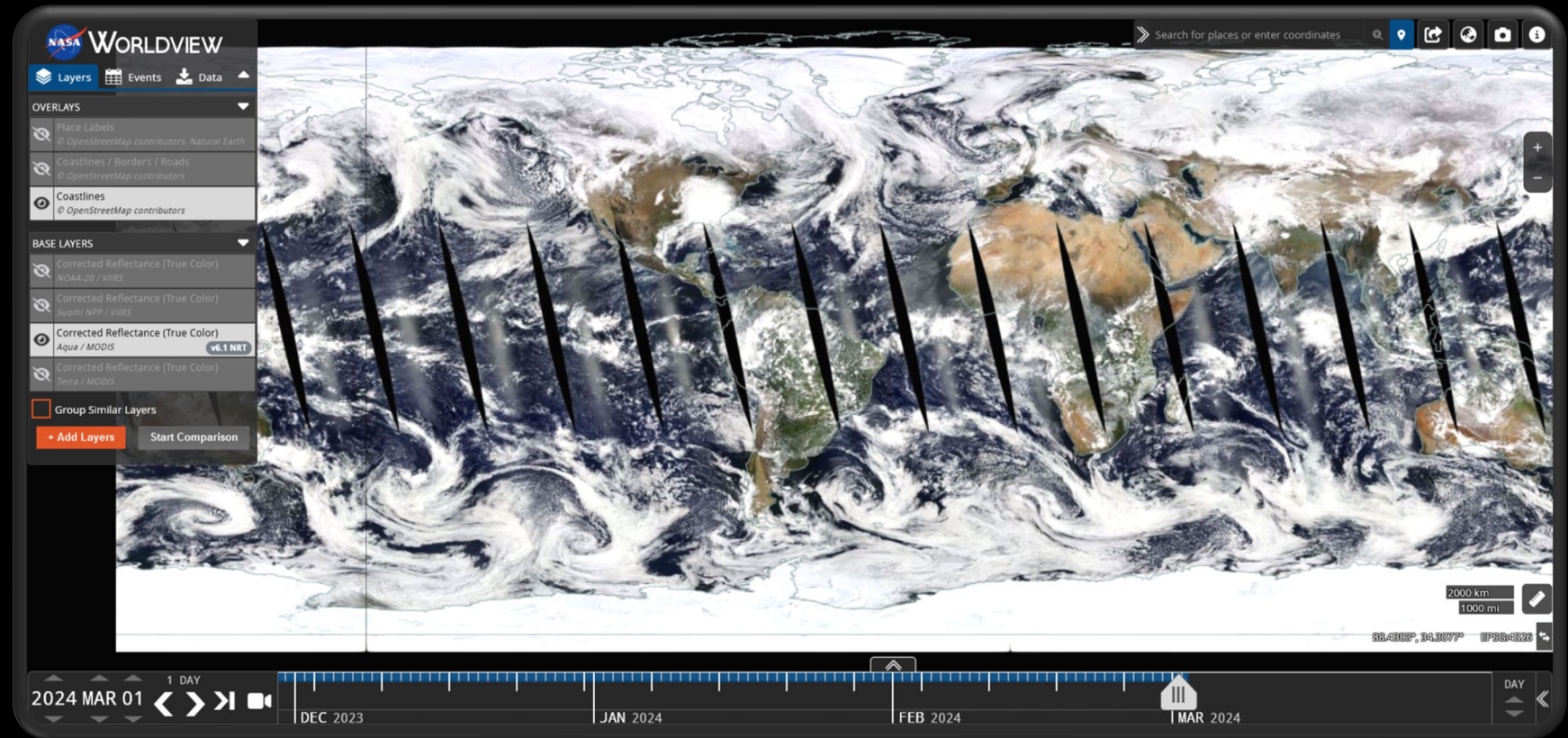
Flooding in Pakistan September 2022



go.nasa.gov/3lnxCUb



Mentimeter Question:



How do you think you might use
Worldview?