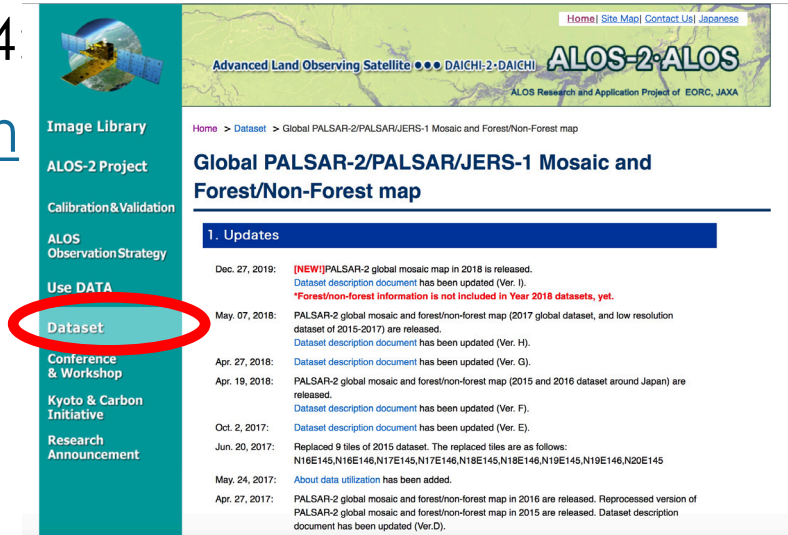


# Descargar Mosaicos SAR Banda-L de JAXA

1. Vaya a la página web de JAXA y regístrese en el paso 4:  
[http://www.eorc.jaxa.jp/ALOS/en/palsar\\_fnf/fnf\\_index.htm](http://www.eorc.jaxa.jp/ALOS/en/palsar_fnf/fnf_index.htm)

2. Seleccione "Dataset" en la columna izquierda:  
- Seleccione "Global PALSAR-2/PALSAR/JERS-1 Mosaic and Forest/Non-Forest map."  
- Desplácese hacia abajo al paso no. 4 "Download" y seleccione el enlace para descargar. Ingrese a su cuenta utilizando su correo y la contraseña que creó durante el proceso de registrarse.



The screenshot shows the JAXA ALOS website interface. On the left, a navigation menu is visible with the 'Dataset' option circled in red. The main content area displays the title 'Global PALSAR-2/PALSAR/JERS-1 Mosaic and Forest/Non-Forest map' and a section for updates. The updates section lists several dates and descriptions of dataset releases, including a note that forest/non-forest information is not included in the 2018 datasets.

## 4. Download

Please register your information from following URL to download the dataset. It is required your email address.

[https://www.eorc.jaxa.jp/ALOS/en/palsar\\_fnf/registration.htm](https://www.eorc.jaxa.jp/ALOS/en/palsar_fnf/registration.htm)

This is temporally registration (especially please check your email address again) and will send email you to accept your registration request. After the confirmation of your request, the download information will send by email.

The dataset download link is

[https://www.eorc.jaxa.jp/ALOS/en/palsar\\_fnf/data/index.htm](https://www.eorc.jaxa.jp/ALOS/en/palsar_fnf/data/index.htm)

\* If you forget your password, please register again.

\* Recommend to use Microsoft Edge, Mozilla Firefox, Apple Safari.

However, it may not be available depending on the version.

\* Depending on your network environment, the downloaded compressed file may be automatically uncompressed.

\* Depending on the time, it may take time to display the page or download the dataset.



# Descargar Mosaicos SAR Banda-L de JAXA

## 3. Seleccione 1996 bajo “JERS-1 SAR mosaic”

### Global PALSAR-2/PALSAR/JERS-1 Mosaic and Forest / Non-forest Map

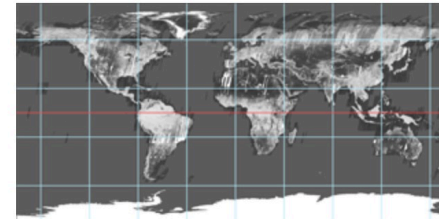
• These map uses Javascript. Please enable JavaScript on your browser.

#### 25m resolution product

##### Global

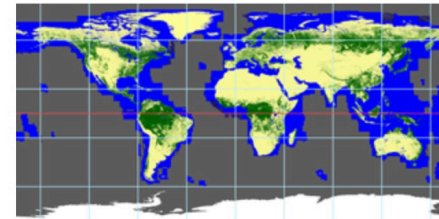
- JERS-1 SAR Mosaic:

< 1996



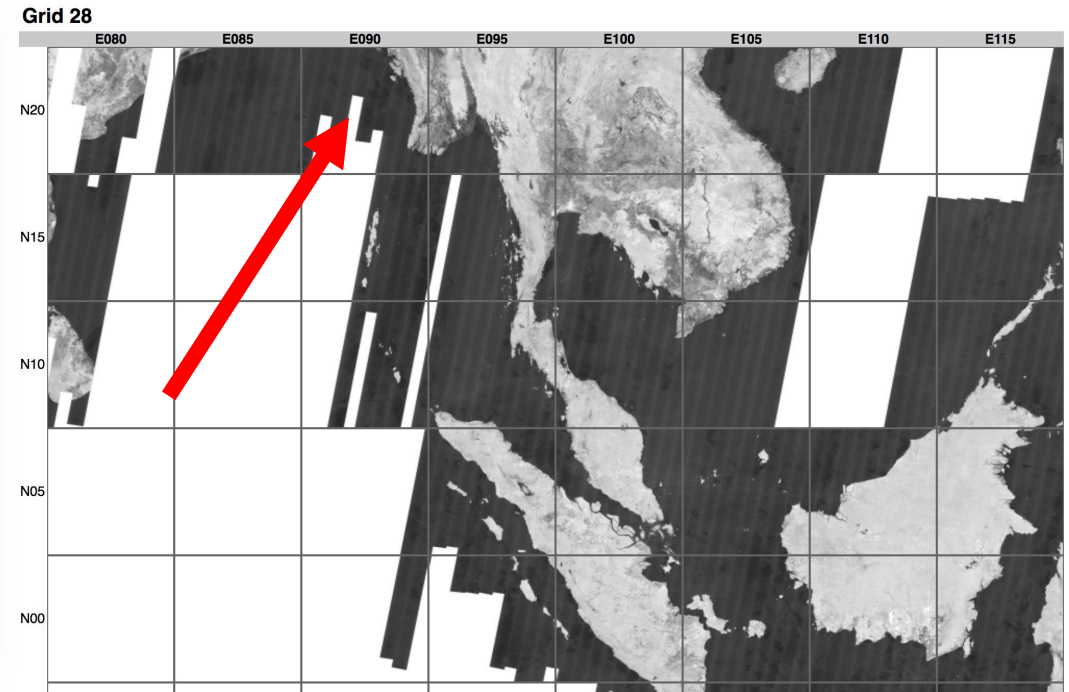
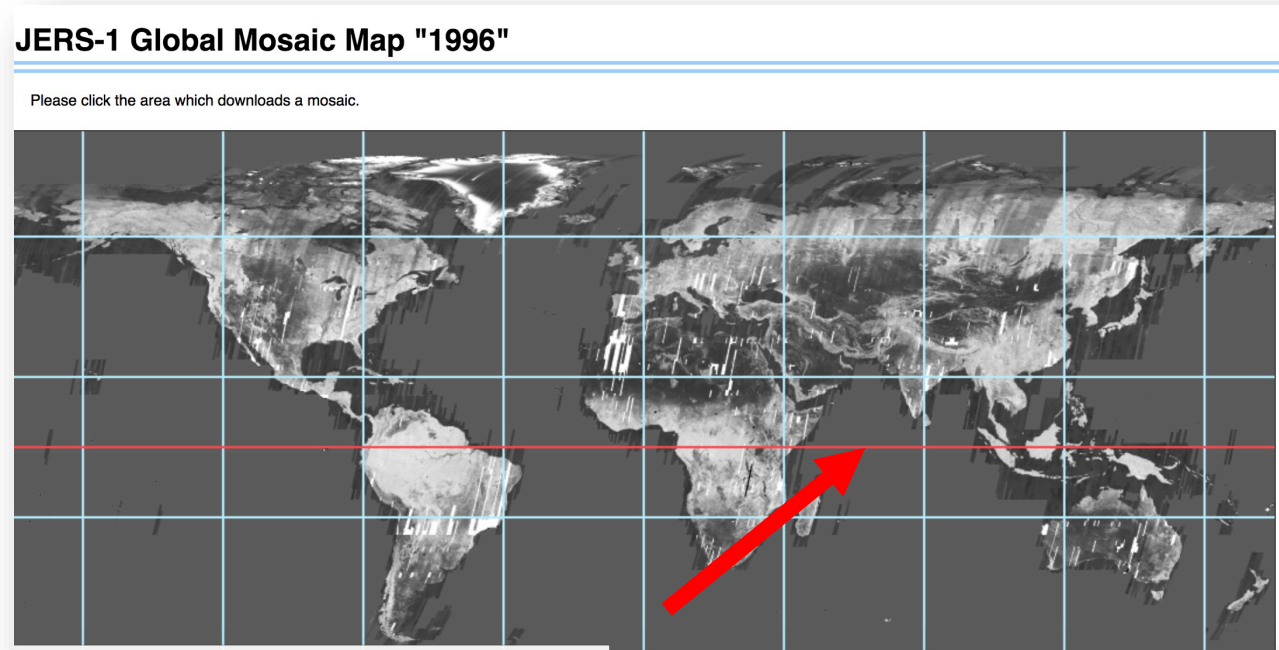
- PALSAR/PALSAR-2 mosaic and forest/non-forest (FNF) map:

>> 2007 >> 2008 >> 2009 >> 2010 >> 2015  
>> 2016 >> 2017 >> 2018



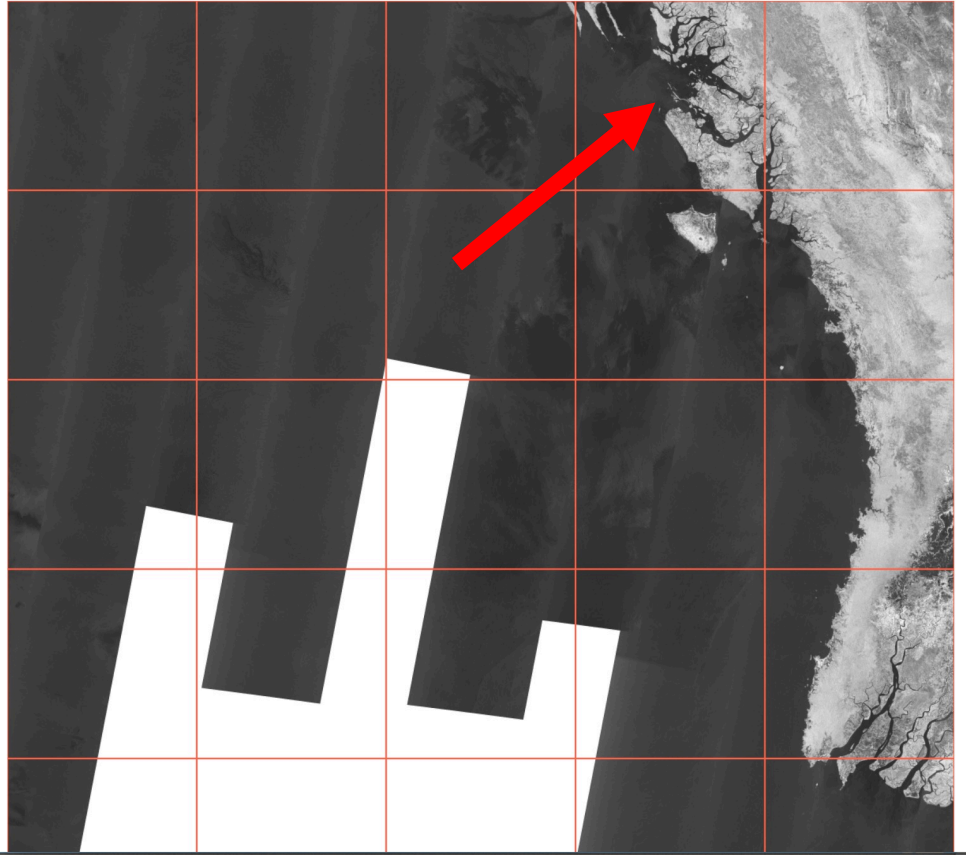
# Descargar Mosaicos SAR Banda-L de JAXA

4. Seleccione 2017 bajo “PALSAR/PALSAR-2 mosaic and forest/non-forest (FNF) map”
5. Nuestra área es la costa de Myanmar. Haga clic en los “azulejos” señalados aquí



# Descargar Mosaicos SAR Banda-L de JAXA

6. Haga clic en el azulejo indicado a la izquierda y se abrirá una nueva ventana. Seleccione **Download**.



N20E093\_1996

Year	Type	Image	Download
1996	HH		



# Descargar Mosaicos SAR Banda-L de JAXA

7. Repita el mismo paso para descargar los azulejos 2 a 5. Debe haber descargado los siguientes cinco archivos:

**N20E093\_1996**

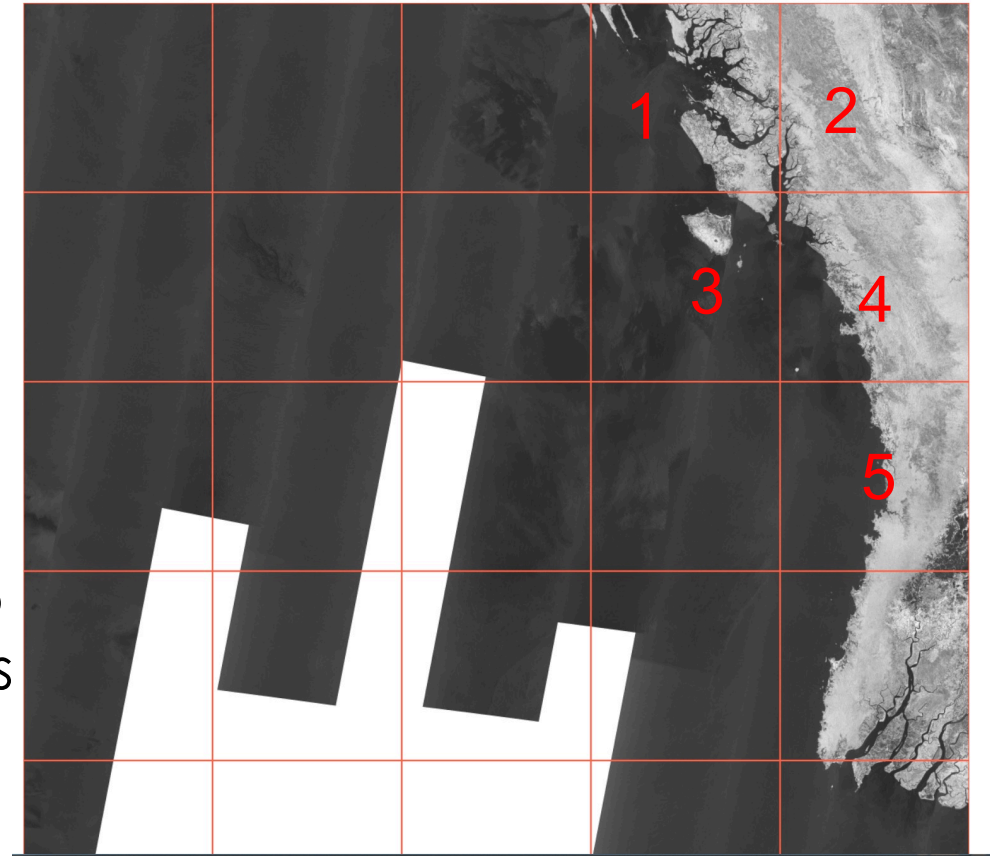
**N20E094\_1996**

**N19E093\_1996**

**N19E094\_1996**

**N18E094\_1996**

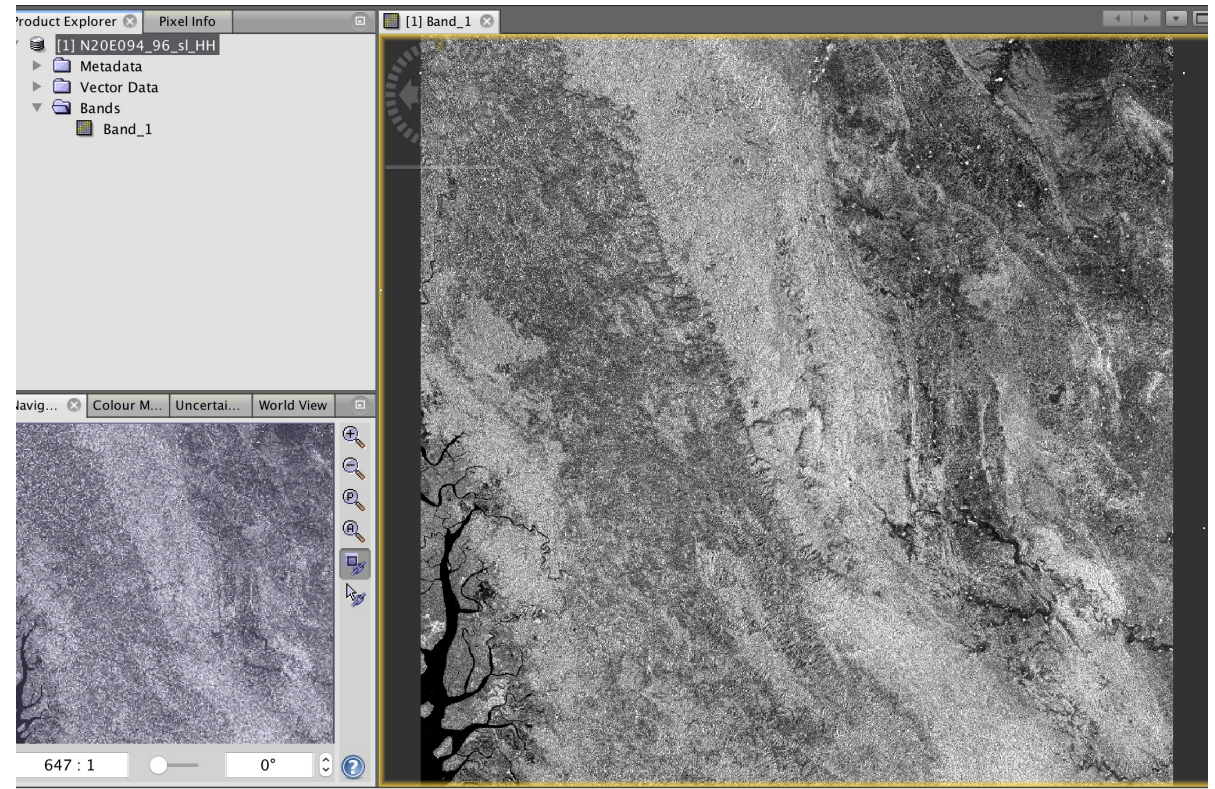
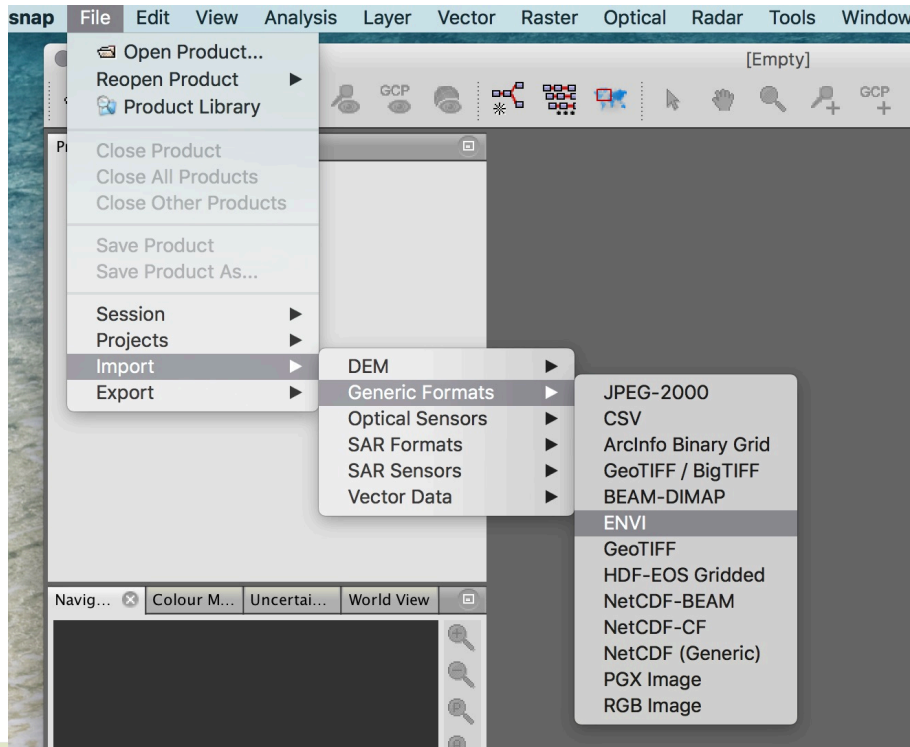
8. Descomprima los archivos. Están en formato ENVI. Ábralos en ENVI, QGIS o la caja de herramientas Sentinel Toolbox usando Import.



# Convertir los Archivos JERS-1 a GeoTIFF

9. Abra la caja de herramientas SNAP Toolbox y vaya a File>Import>Generic Formats>ENVI y seleccione el N20E094\_96\_sl\_HH

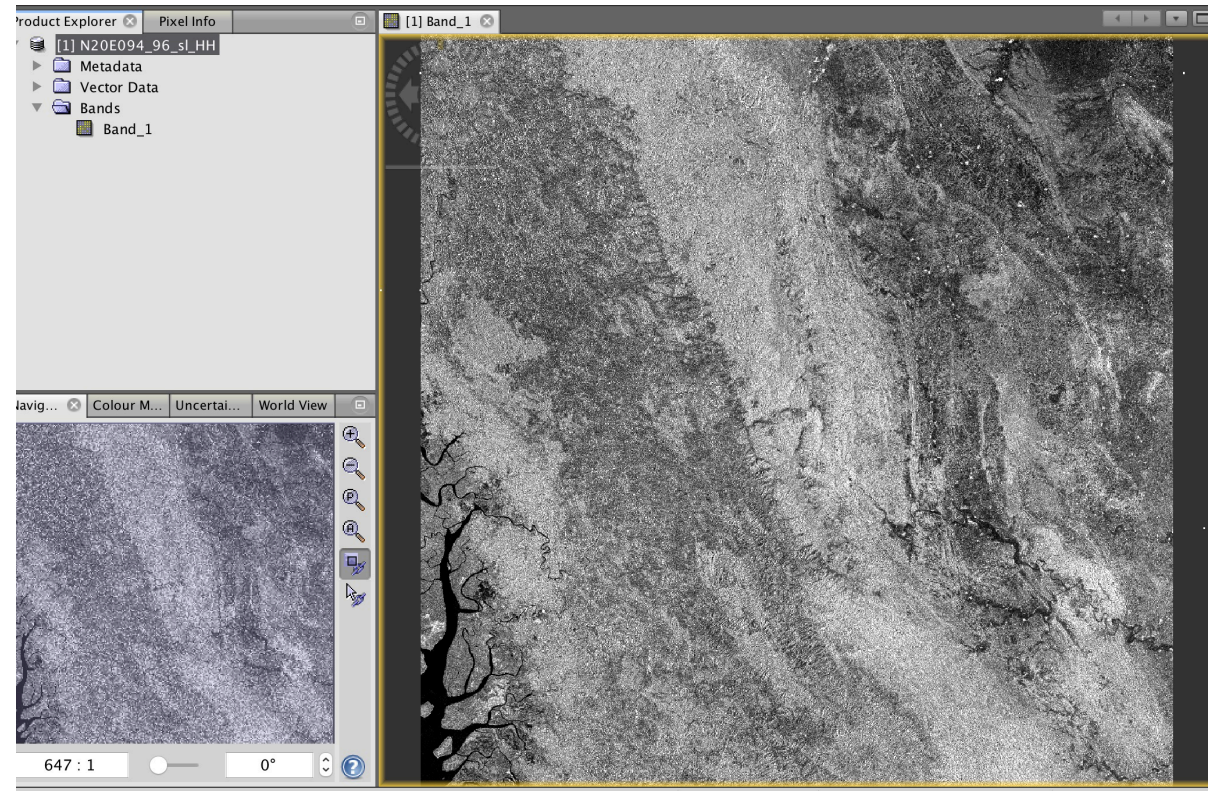
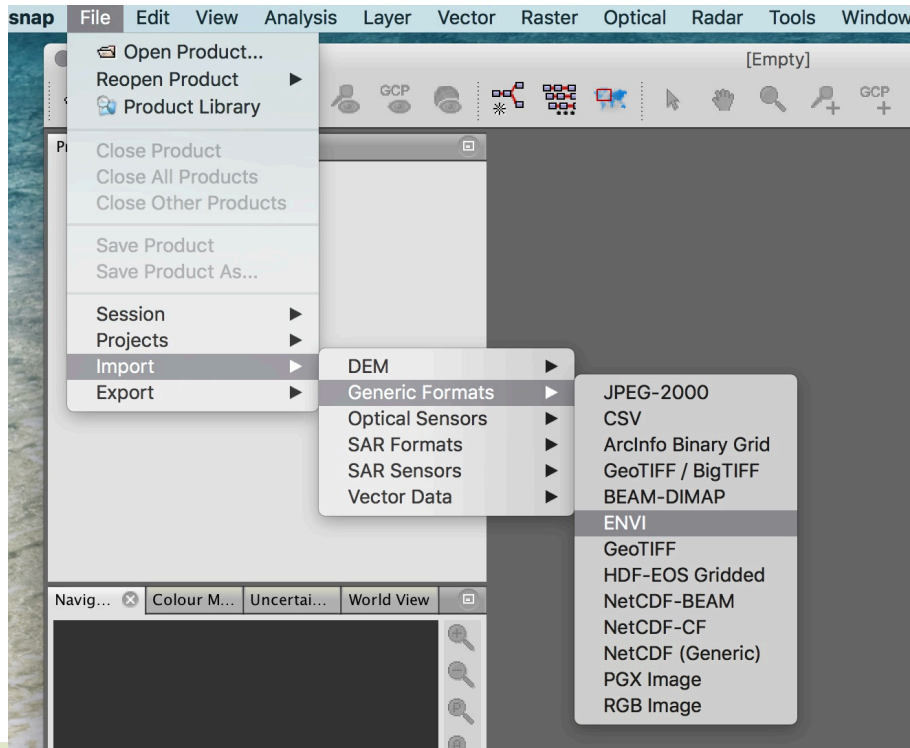
10. Abra el directorio de bandas "Bands" y haga doble clic en Band 1 para abrirla.



# Convertir los Archivos JERS-1 a GeoTIFF

11. Haga clic en Band\_1 y vaya a File>Export>GeoTIFF

12. Repita este mismo paso para los otros cuatro archivos.



# Importar un Archivo Vectorial de la Distribución Mundial de los Manglares

21. Vaya a <https://data.unep-wcmc.org/datasets/45> y descargue el archivo Global Mangrove Watch (GMW) para **2010**. Descomprímalo.

The screenshot displays the 'UN WCMC OCEAN DATA VIEWER' interface. The main map shows the world with mangrove distribution data for 1996-2016. The dataset detail panel on the left contains the following information:

**DATASET DETAIL**  
Global Mangrove Watch (1996 - 2016)

**DESCRIPTION**  
Please use the main download button to download all years.  
To download individual years please use the following links:  
• [GMW 1996](#)  
• [GMW 2007](#)  
• [GMW 2008](#)  
• [GMW 2009](#)  
• [GMW 2010](#) (indicated by a red arrow)  
• [GMW 2015](#)

**ACCESS**

- Download
- Metadata
- Factsheet
- ArcGIS

Legend:

- Blue: Maintained
- Red: Lost
- Green: Gained

