

Download L-Band SAR Mosaic Tiles from JAXA

1. Access the JAXA website and register under Step 4:

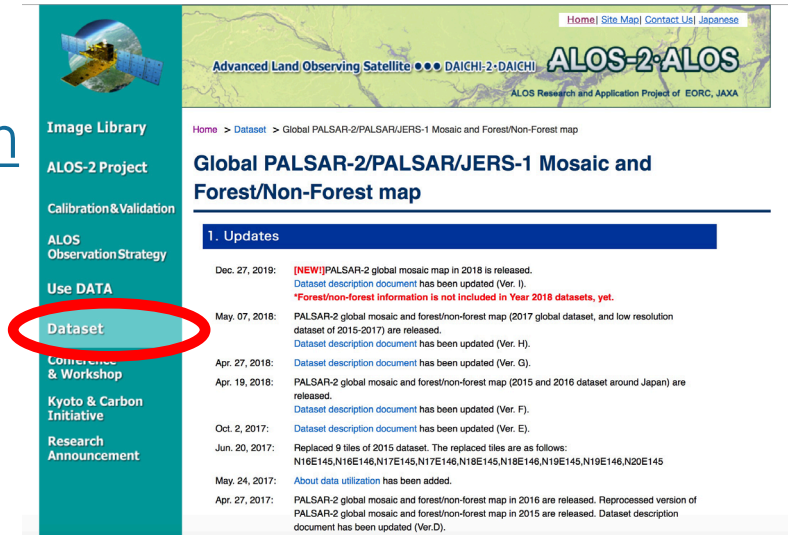
http://www.eorc.jaxa.jp/ALOS/en/palsar_fnf/fnf_index.htm

2. Select "Dataset" on the left column:

- Select "Global PALSAR-2/PALSAR/JERS-1 Mosaic and Forest/Non-Forest map."

- Scroll down to Step 4 "Download" and select the downloading link.

Log into your account using the email and password created during the registration process.



The screenshot shows the JAXA website interface. On the left, a navigation menu is visible with the 'Dataset' option circled in red. The main content area displays the title 'Global PALSAR-2/PALSAR/JERS-1 Mosaic and Forest/Non-Forest map' and a section titled '1. Updates' with a list of recent releases and updates.

4. Download

Please register your information from following URL to download the dataset. It is required your email address.

https://www.eorc.jaxa.jp/ALOS/en/palsar_fnf/registration.htm

This is temporally registration (especially please check your email address again) and will send email you to accept your registration request. After the confirmation of your request, the download information will send by email.

The dataset download link is

https://www.eorc.jaxa.jp/ALOS/en/palsar_fnf/data/index.htm

* If you forget your password, please register again.

* Recommend to use Microsoft Edge, Mozilla Firefox, Apple Safari.

However, it may not be available depending on the version.

* Depending on your network environment, the downloaded compressed file may be automatically uncompressed.

* Depending on the time, it may take time to display the page or download the dataset.



Download L-Band SAR Mosaic Tiles from JAXA

3. Select 1996 under “JERS-1 SAR mosaic”

Global PALSAR-2/PALSAR/JERS-1 Mosaic and Forest / Non-forest Map

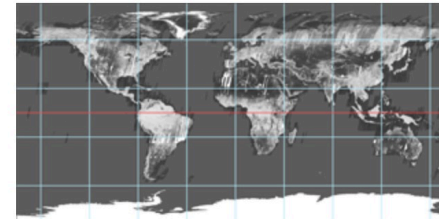
• These map uses Javascript. Please enable JavaScript on your browser.

25m resolution product

Global

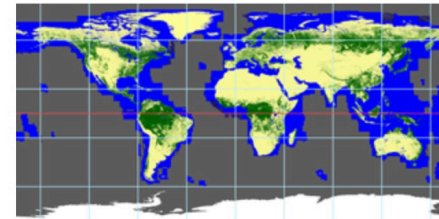
- JERS-1 SAR Mosaic:

< 1996



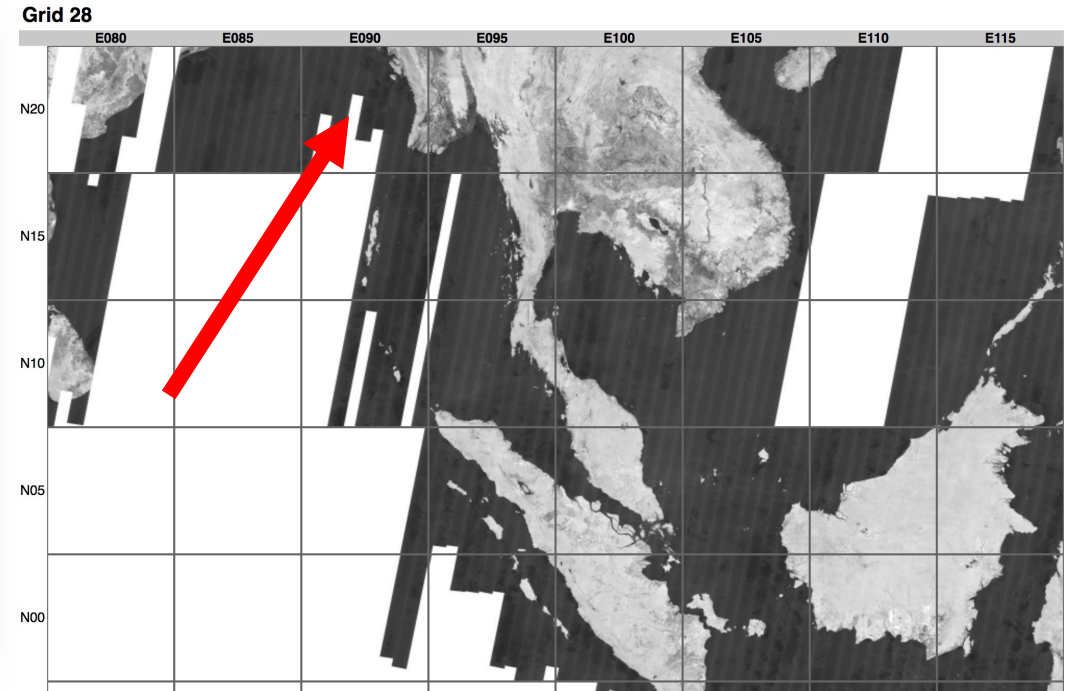
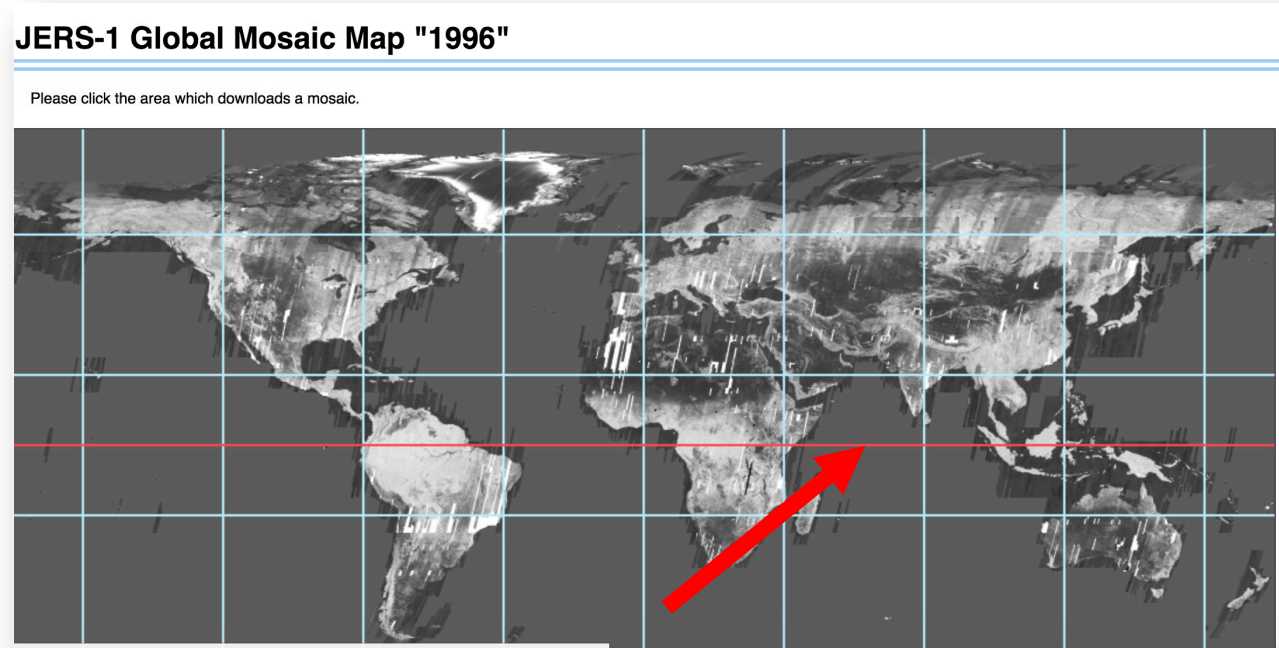
- PALSAR/PALSAR-2 mosaic and forest/non-forest (FNF) map:

>> 2007 >> 2008 >> 2009 >> 2010 >> 2015
>> 2016 >> 2017 >> 2018



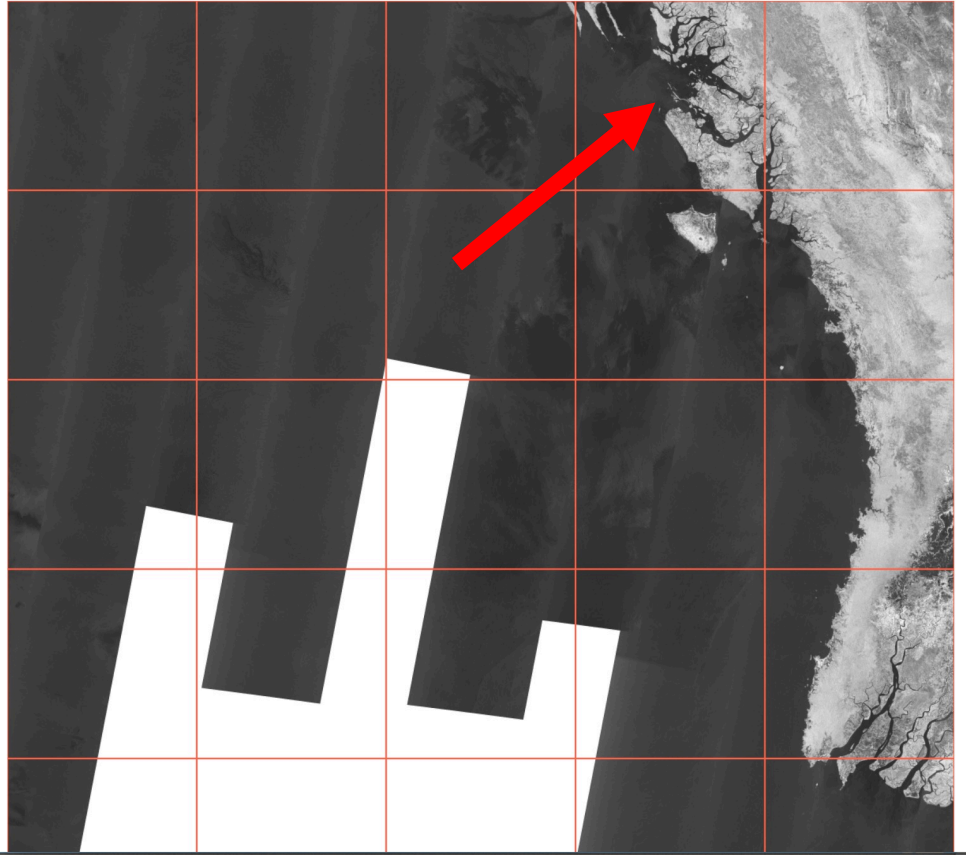
Download L-Band SAR Mosaic Tiles from JAXA

4. Select 2017 under “PALSAR/PALSAR-2 mosaic and forest/non-forest (FNF) map”
5. Our study area is the coast of Myanmar. Click on the tiles noted here



Download L-Band SAR Mosaic Tiles from JAXA

6. Click on the tile noted on the left and a new window will open. Select download.



N20E093_1996

Year	Type	Image	Download
1996	HH		



Download L-Band SAR Mosaic Tiles from JAXA

7. Repeat the same process and download tiles 2-5. You should have downloaded the following five tiles:

N20E093_1996

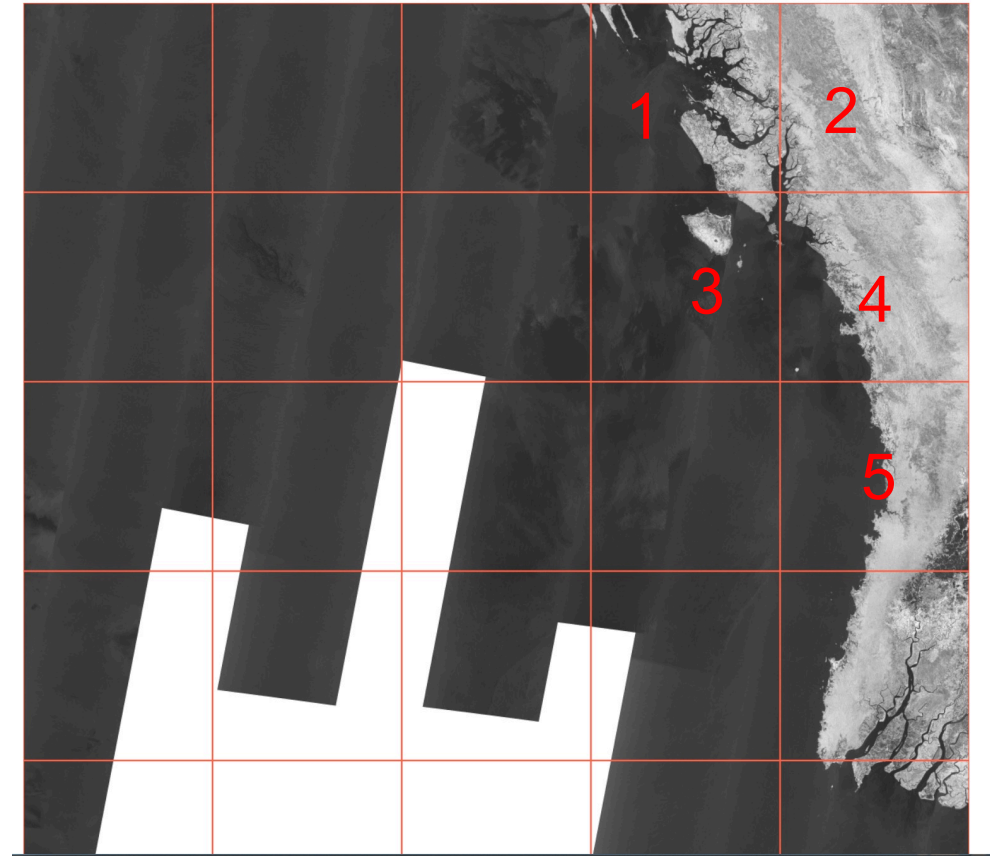
N20E094_1996

N19E093_1996

N19E094_1996

N18E094_1996

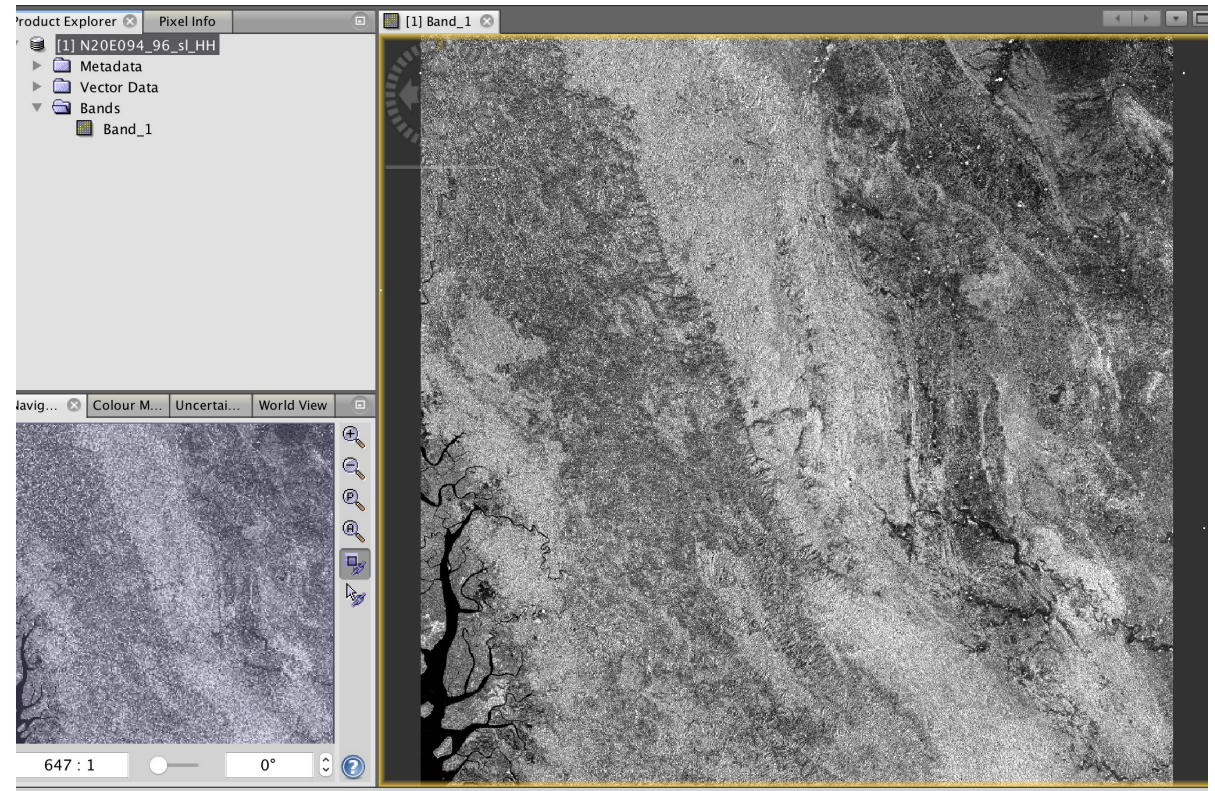
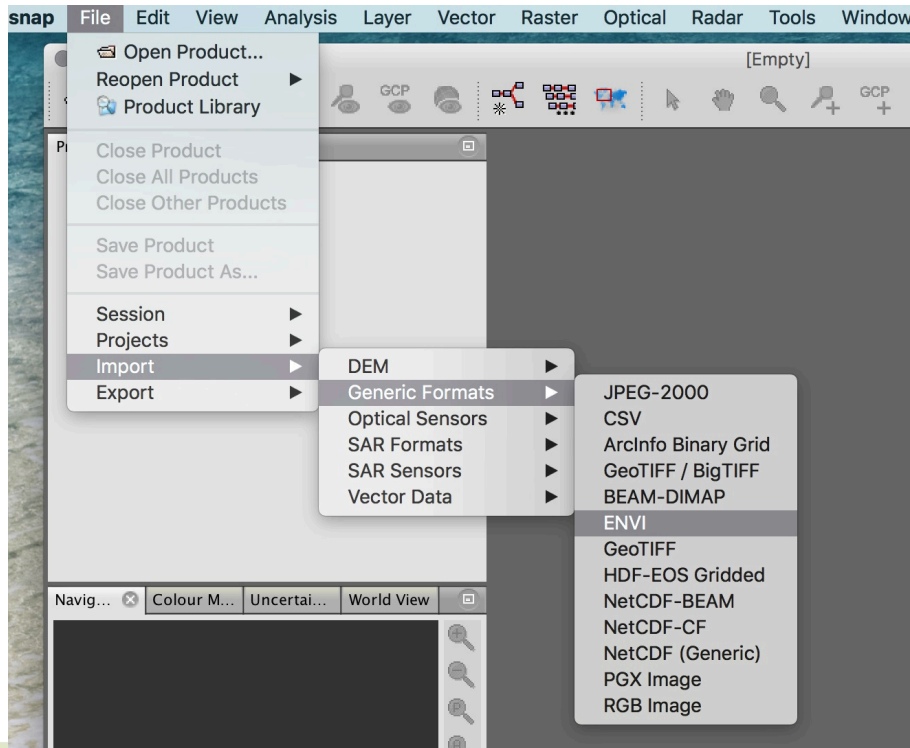
8. Unzip the files. They are in ENVI format. Open them in either ENVI, QGIS or the Sentinel Toolbox using Import.



Convert the JERS-1 Files to GeoTIFF

9. Open the SNAP Toolbox and go to File>Import>Generic Formats>ENVI and select the N20E094_96_sl_HH

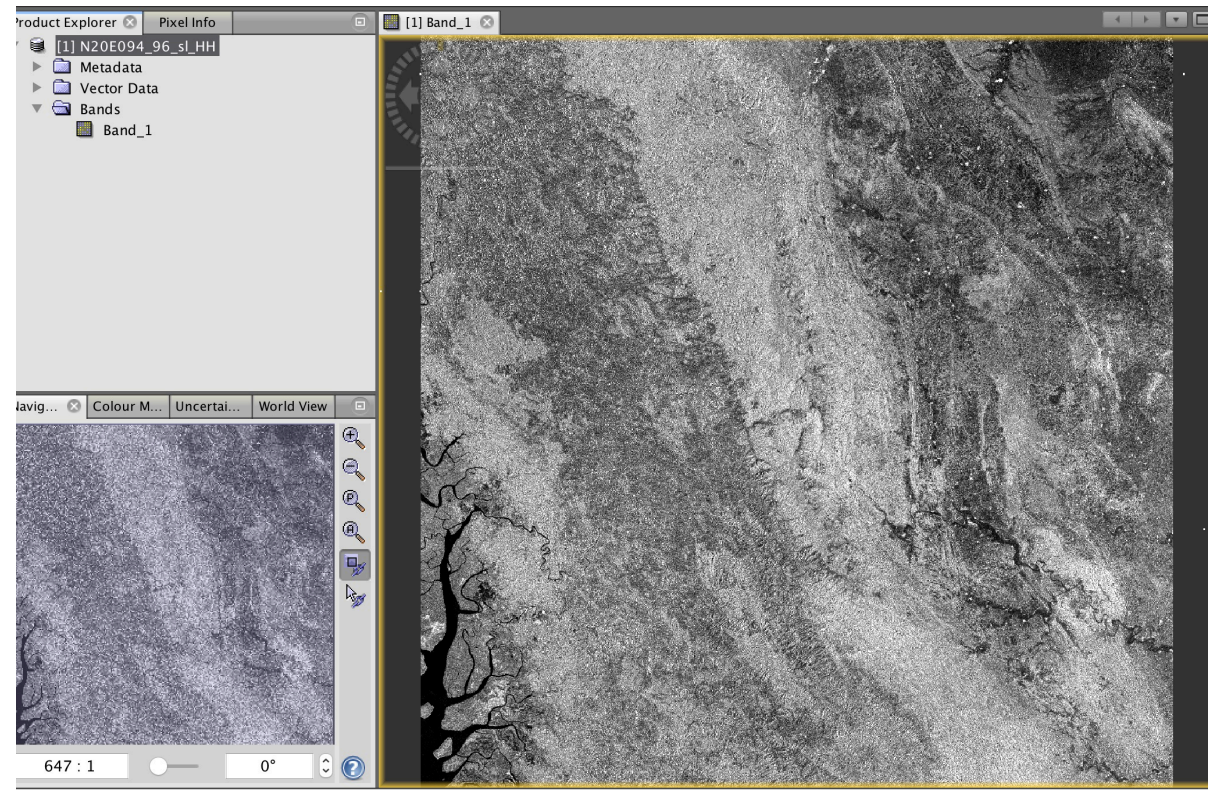
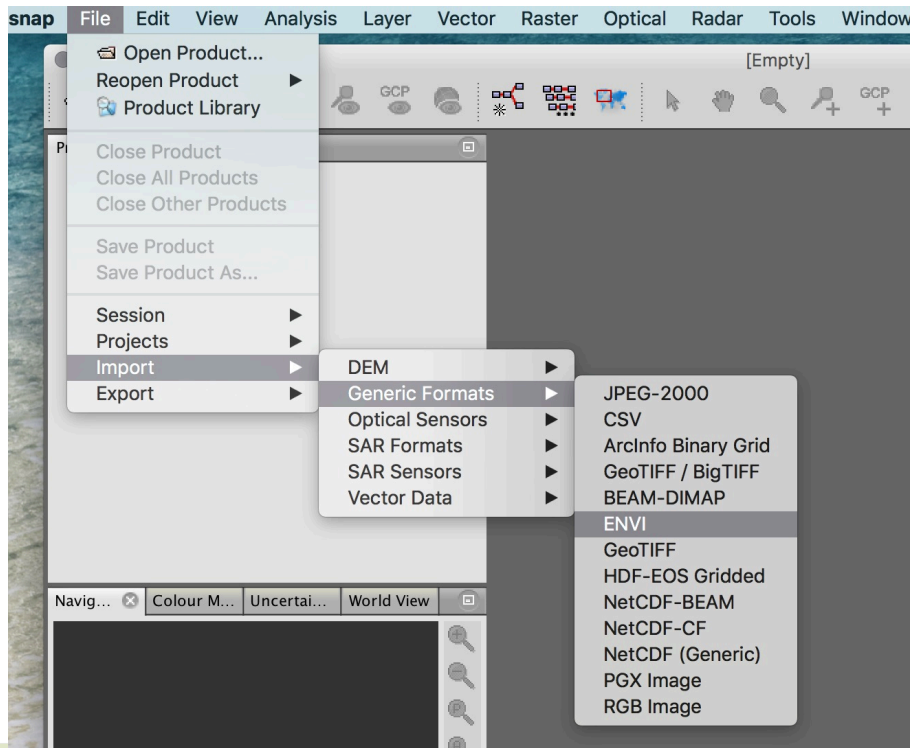
10. Open the Bands directory and double click on Band 1 to open it



Convert the JERS-1 Files to GeoTIFF

11. Click on Band_1 and then go to File>Export>GeoTIFF

12. Repeat this same step for the other four files.



Import a Global Mangrove Distribution Vector File

21. Go to <https://data.unep-wcmc.org/datasets/45> and download the Global Mangrove Watch (GMW) **2010** file. Unzip it.

The screenshot shows the 'OCEAN DATA VIEWER' interface for the 'Global Mangrove Watch (1996 - 2016)' dataset. The top navigation bar includes the UNEP WCMC logo, the title 'OCEAN DATA VIEWER', and a link 'About the site'. The main area displays a world map with mangrove distribution data overlaid. Below the map, there are three tabs: 'DATASET DETAIL', 'Global Mangrove Watch (1996 - 2016)', and 'ACCESS'. The 'DATASET DETAIL' tab is active, showing a 'DESCRIPTION' section with the following text: 'Please use the main download button to download all years. To download individual years please use the following links:'. A list of links follows: GMW 1996, GMW 2007, GMW 2008, GMW 2009, GMW 2010, and GMW 2015. A red arrow points to the GMW 2010 link. To the right of the description is a legend with three categories: 'Maintained' (blue square), 'Lost' (red square), and 'Gained' (green square). The 'ACCESS' tab contains four buttons: 'Download', 'Metadata', 'Factsheet', and 'ArcGIS'. The bottom right corner of the interface has links for 'Leaflet', 'Terms & Feedback', and 'Sou'.

